

WALKER®



2018 UNIVERSAL PARTS CATALOGUE

VISIT OUR
NEW ONLINE CATALOGUE:
www.walkercatalogue.eu



EMEA
EUROPE, MIDDLE EAST, AFRICA

TENNECO
www.walker-eu.com

WALKER[®]

AS FROM NOW
3 YEARS WARRANTY*



Silencers



Catalytic Converters



EVO S & EVO C
Diesel Particulate Filters

*For conditions: visit www.walkercatalogue.eu



TENNECO
training.tenneco.com

TABLE OF CONTENTS	p. 3 - 5
STOCK CODES	p. 6
Code de stock Lagerschlüssel Magazijn-codes	
INFORMATION	p. 7
Information Information Informatie	
NOTES	p. 7
Notes Hinweis Aantekeningen	
CLAMPS	p. 8
Colliers Schellen Klemmen	
M8 CLAMPS	p. 8
Colliers M8 M8 Schellen M8 Klemmen	
M10 CLAMPS	p. 9
Colliers M10 M10 Schellen M10 Klemmen	
BANDCLAMPS	p. 9
LAP JOINT CLAMP	p. 10
VOLVO/RENAULT - CLAMP	p. 11
Colliers / Schellen / Klemmen	
VAG CLAMPS	p. 12
Colliers Schellen Klemmen	
SPECIAL CLAMPS (1/2 Clamps, Ring clamp, Ring Clamp w/ Gasket)	p. 13
SPECIAL BOLTS	p. 14
Vis Spéciales Spezial Schrauben Speciale Bouten	
UNIVERSAL BOLTS	p. 15
CONNECTION PIPES	p. 16
Manchons Rohrverbinder Pijpverbinders	
VAG TYPE	p. 16
WITHOUT CLAMPS	p. 17
U-CLAMPS M10	p. 17
VAG CLAMPS	p. 18
LENGTH 20 CM	p. 19
Turbulures de Raccordement 20 cm Rohrverlängerungen 20 cm Verlengstukken 20 cm	
ALUMINISED 3-STEP REDUCTION PIPE	p. 19
ALUMINISED UNIVERSAL Y-PIPE	p. 19
ALUMINIZED EXHAUST BENDS WITHOUT SLOTS	p. 20
Raccords Coudés Rohrbogen Lasbochten	
ANGLE 30°	p. 20
ANGLE 45°	p. 20
ANGLE 60°	p. 21
ANGLE 90°	p. 22

ALUMINIZED EXHAUST BENDS WITH SLOTS	p. 23
Raccords Coudés Rohrbogen Lasbochten	
ANGLE 30°	p. 23
ANGLE 45°	p. 23
ANGLE 60°	p. 24
ANGLE 90°	p. 24
ALUMINISED OVER AXLE BEND	p. 25
ALUMINISED EXHAUST BENDS 90° FOR WELDING	p. 25
STRAIGHT TUBING 2 METERS	p. 26
Tubes Droits 2 m Gerade Rohre 2 m Rechte Pijpen 2 m	
ALUMINISED	p. 26
MILD STEEL	p. 27
FLEXIBLE TUBING	p. 28
CIRCULAR PROFILE GALVANISED	p. 28
POLYGONAL PROFILE GALVANISED 1.000 mm	p. 29
POLYGONAL PROFILE GALVANISED 2.000 mm	p. 30
PIPE EXTENSIONS	p. 31
Tubes d'Extension Rohrverlängerungen Verlengstukken	
REDUCING BUSHING	p. 32
Raccords de Réduction Rohrreduzierungen Reduceerbussen	
WITHOUT SLOTS	p. 32
WITH SLOTS	p. 32
WITH SLOTS FROM BOTH SIDES	p. 33
FLEX PIPES	p. 34
Tubes Flexibles Flexrohre Flexibele Pijpen	
FLEX WITH PIPES	p. 34
FLEX 3-STEP PIPES - NON LINED	p. 34
FLEX WITHOUT PIPES	p. 35
FLEX WITH PIPES AND SLOTS - NON LINED	p. 36
INSULATOR BLOCKS	p. 37
HOSE CLIPS STAINLESS STEEL	p. 38
HOSE CLIP ASSORTMENT BOX	p. 39
UNIVERSAL CATALYTIC CONVERTER	p. 40
UNIVERSAL CATALYTIC CONVERTER ROUND	p. 40
UNIVERSAL CATALYTIC CONVERTER OVAL	p. 41
MINI-CONVERTER	p. 42

UNIVERSAL SILENCER	p. 43
UNIVERSAL SILENCER ROUND	p. 43
UNIVERSAL SILENCER ROUND WITH SLOTS	p. 43
UNIVERSAL SILENCER OVAL	p. 44
UNIVERSAL SILENCER OVAL WITH SLOTS	p. 44
HIGH PERFORMANCE TURBO MUFFLERS	p. 45
INLET CENTRAL	p. 45
INLET SIDE	p. 45
UNIVERSAL STAINLESS STEEL TAILPIPE ROUND	p. 46
VW STAINLESS STEEL TAILPIPE ROUND WITH CHROMED EXTERNAL SURFACE	p. 47
UNIVERSAL STAINLESS STEEL TAILPIPE ROUND WITH ANGLE	p. 48
UNIVERSAL REPAIR COLLARS	p. 49
REPAIR FLANGE	p. 50
REPAIR HANGER	p. 53
UNIVERSAL HANGER	p. 55
PSA BODY CLAMPS	p. 56 - 59
LAMBDA SENSOR PLUG	p. 60
LAMBDA SENSOR NIPPLE	p. 61
TOOLS	p. 62
PIPE-END SHAPER	P. 62
PIPE CUTTER	p. 62
PIPE EXPANDER	p. 62
STORAGE HOOK	p. 63
STORAGE HOOK REMOVER	p. 63
CARTRIDGE GUN	p. 64
CHEMICALS	p. 64
PUTTY PASTE & LUBRICATION FLUID	P. 64
REGENERATION ACTIVATOR & PREVENTION DOSE	p. 65
FUEL BORNE CATALYST FOR DPF	p. 66

STOCK CODES

Code de Stock | Lagerschlüssel | Magazijn-codes

GB

The **stock code** aids customers in efficient stock handling. These codes are independent of the serial number. The following numerical codes are used on the exhaust system labels and in the catalogue illustrations.

F

Le **code de stock** aide les clients dans leur utilisation efficace de l'espace et de la manipulation de stock. Ces codes sont indépendants du numéro de série. Le code numéro suivant figure sur l'étiquette et dans les illustrations du catalogue.

D

Die **zweistelligen Lagerschlüssel** ermöglichen dem Kunden eine raumsparende, rationelle Lagerhaltung. Sie sind unabhängig von der Artikel-Nummer. Die nachstehend aufgeführten numerischen Schlüssel-Nummern sind auf den Teile-Etiketten und auch bei den Katalog Abbildungen angegeben.

NL

De **magazijn-codes** maken het mogelijk ruimtebesparend en efficiënt gebruik te maken van de opslagruimten bij de voorraad behandeling. Deze codes staan onafhankelijk van het serienummer. De achterste codes staan zowel op het uitlaatsysteem etiket als in de illustraties Text in de catalogus vermeld.

ACCESSORIES

Accessoires | Zubehörteile | Accessoires

GB		F		D		NL	
Accessories and miscellaneous		Accessoires et divers		Zubehörteile und diverser		Accessoires en diverser	
Code		Code		Schlüssel		Code	
71	Pipe under 20 cm	71	Tubes de moins de 20 cm	71	Rohre unter 20 cm	71	Pijpen korter dan 20 cm
78	Pieces of racking assembly	78	Eléments de stockage	78	Regalsystem-Teile	78	Rekkensysteem
85	Chemical products (Eolys, AdBlue, paste & putty)	85	Produits chimiques (Eolys, Additifs, pâtes à joint et mastics)	85	Chemikalien (Eolys, Additive, Paste & Kitt)	85	Chemische producten (Eolys, Toevoegingen, Montage pasta en afdicht pasta)

MOUNTING COMPONENTS

Pièces de Montage | Montageteile | Montage Onderdelen

GB		F		D		NL	
Mounting components		Pièces de montage		Montagegeteil		Montage onderdelen	
Code		Code		Schlüssel		Code	
23	Hangers	23	Supports	23	Aufhängeteile	23	Hangers
24	Clamps	24	Colliers de serrage	24	Schellen	24	Klemmen
25	Bolts	25	Vis	25	Bolzen	25	Bouten
26	Miscellaneous mountings	26	Accessoires de montage divers	26	Verschiedene Zubehörteile	26	Diverse montageonderdelen
27	Connection pipes	27	Manchons	27	Rohrverbinder	27	Pijpverbinder
28	Tools	28	Outils	28	Werkzeuge	28	Gereedschappen

GB

Every effort has been made to ensure the information in this catalogue is correct, but we cannot be responsible for any losses arising from errors or omissions. This catalogue supersedes all previous editions.

F

Nous avons rédigé ce catalogue avec le plus grand soin, mais en fonction de l'évolution très rapide des modèles, nous ne pourrions en aucun cas être tenus responsables de toutes erreurs ou omissions. Ce catalogue remplace toutes les éditions précédentes.

D

Die Informationen in diesem Katalog wurden so korrekt wie möglich erstellt. Für Nachteile, die aus Fehlern oder Auslassungen entstehen können wir jedoch nicht verantwortlich zeichnen. Alle früheren Ausgaben werden durch diesen Katalog ersetzt.

NL

Alle mogelijke inspanningen werden gedaan om te verzekeren dat de informatie in deze catalogus correct is. Toch kunnen wij niet aansprakelijk gesteld worden voor fouten noch gebrekkige informatie. Deze catalogus vervangt alle vorige edities.

NOTES

Notes | Hinweis | Aantekeningen

GB

© 2013-2014 COPYRIGHT WALKER EUROPE INC. Catalogue, illustrations and numbers are not to be reproduced, in whole or in part. Walker reserves the right to modify or discontinue the components illustrated in this catalogue. Car maker names and numbers are used for reference purposes only.

F

© 2013-2014 COPYRIGHT WALKER EUROPE INC. La reproduction totale ou partielle du catalogue, des illustrations et des références est interdite. T.A.E. Inc. se réserve le droit de modifier ou de ne pas reproduire la fabrication des pièces figurant dans ce catalogue. Les marques de voitures et les références d'origine sont indiquées à titre de comparaison seulement.

D

© 2013-2014 COPYRIGHT WALKER EUROPE INC. Vervielfältigungen des Katalogs, der Abbildungen oder Nummern - auch auszugsweise - sind nicht gestattet. Änderungen oder Einstellung der Produktion bestimmter Teile behalten wir uns vor. Original Teile - Nummern dienen nur als Vergleich, sie dürfen nicht in Rechnungen und Angeboten verwendet werden.

NL

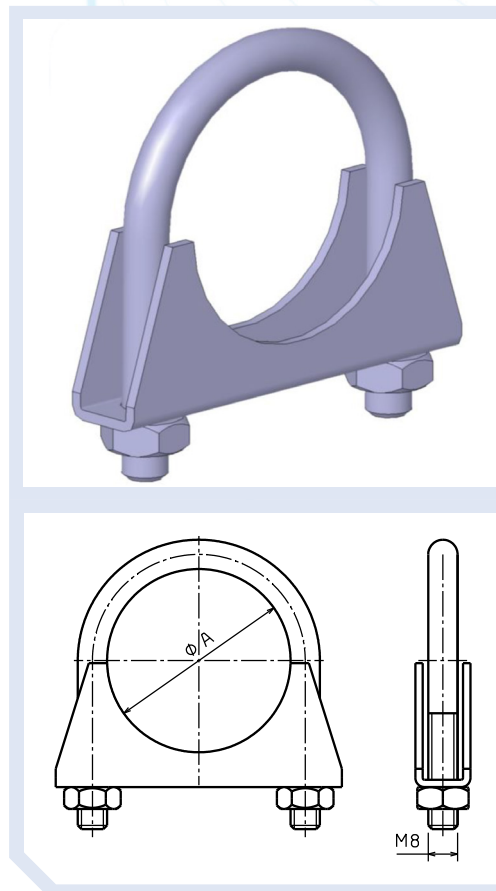
© 2013-2014 COPYRIGHT WALKER EUROPE INC. Nadruk van deze catalogus of gedeelten hiervan, met inbegrip van alle illustraties en nummers is verboden. Het recht tot wijzigingen, evenals het recht om onderdelen uit productie te nemen is voorbehouden. Automerken en nummers zijn slechts voor verwijzingsdoeleinden gebruikt.



M8 UNIVERSAL CLAMPS

mm	Inch	Walker ref. no
25,0	1	82301
28,0	1 1/8	82302
32,0	1 1/4	82303
35,0	1 3/8	82304
38,0	1 1/2	82305
40,0	1 5/8	82348
41,5	1 5/8	82306
43,0	1 11/16	84285
44,5	1 3/4	82307
48,0	1 7/8	82308
50,8	2	82309
52,0	2 1/16	82394
54,0	2 1/8	82310
57,0	2 1/4	82311
60,0	2 3/8	82312
65,0	2 1/2	82313
66,5	2 5/8	82314
70,0	2 3/4	82315
73,0	2 7/8	82316
76,0	3	82317
80,0	3 1/8	84286
83,0	3 1/4	82337
89,0	3 1/2	82334
92,0	3 5/8	84287
95,0	3 3/4	82335
102,0	4	82336

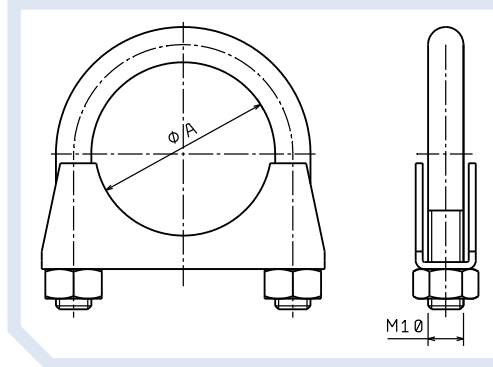
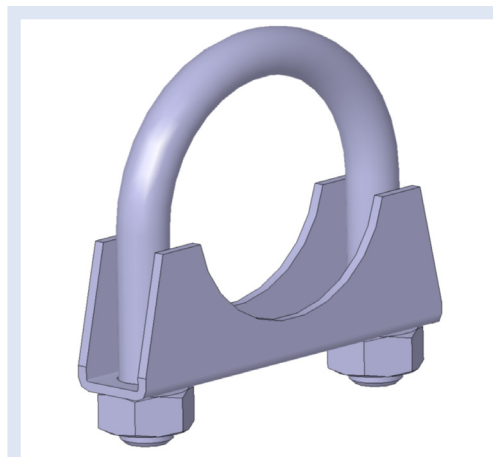
Stock code: 24



M10 UNIVERSAL CLAMPS

mm	Inch	Walker ref. no
36,0	1 1/8	82347
38,0	1 1/2	82319
40,0	1 5/16	80892
42,0	1 7/16	82320
45,0	1 3/4	82321
48,0	1 7/8	82322
50,0	2	82346
52,0	2 1/16	82325
54,0	2 1/8	82326
58,0	2 3/16	82328
60,0	2 3/8	82350
62,0	2 1/2	80893
65,0	2 1/2	80339
70,0	2 3/4	80493
76,0	3	80894
80,0	3 1/8	80895
83,0	3 1/4	80896
89,0	3 1/2	80897
92,0	3 5/8	80898
95,0	3 3/4	80899
102,0	4	80903

Stock code: 24



BANDCLAMPS

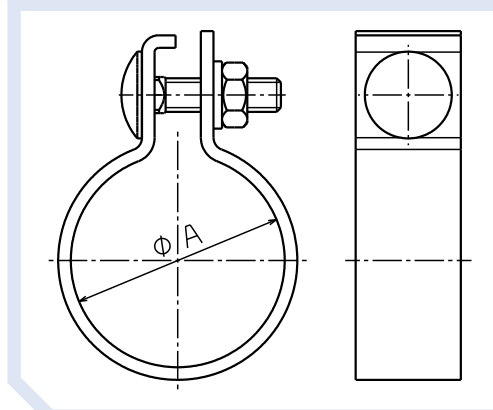
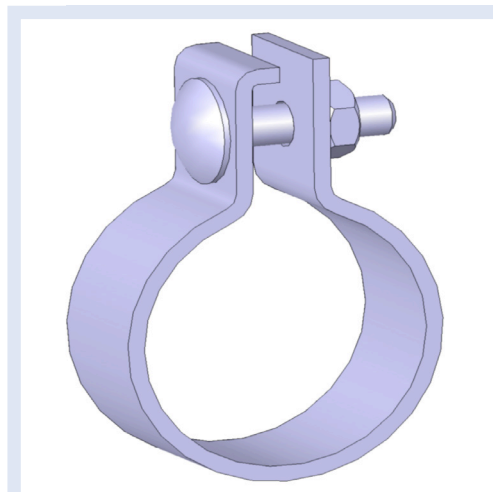
mm	Inch	Walker ref. no
25,0		80908
32,0		81902
35,0		81905
38,0		81908
41,5		81911
44,5		81914
48,0		81917
50,8		81920
54,0		81923
55,5		81971

Stock code: 24

The simple, effective way to connect exhaust component that may require additional retaining capabilities.

Application

- Connecting exhaust pipe and silencers.
- Due to its simple design, the clamp can also be fitted with an additional bracket and is then suitable for use as a retaining clamp.



LAP JOINT CLAMP

Aluminised; Band thick. 0,7 mm

A O.D. Ø TUBE ± 1.0 mm		B O.D. Ø FLEX ± 1.0 mm	
mm	Inch	mm	Walker ref. no
51	2	55	61772
57	2¼	62	61773
64	2½	69	61774
70	2¾	75	61775
76	3	81	61776
89	3½	94	61777
102	4	107	61778
114	4½	119	61779
127	5	132	61780
152	6	157	61781

Stock code: 24

LAP JOINT CLAMP

Stainless Steel; Band thick. 0,5 mm

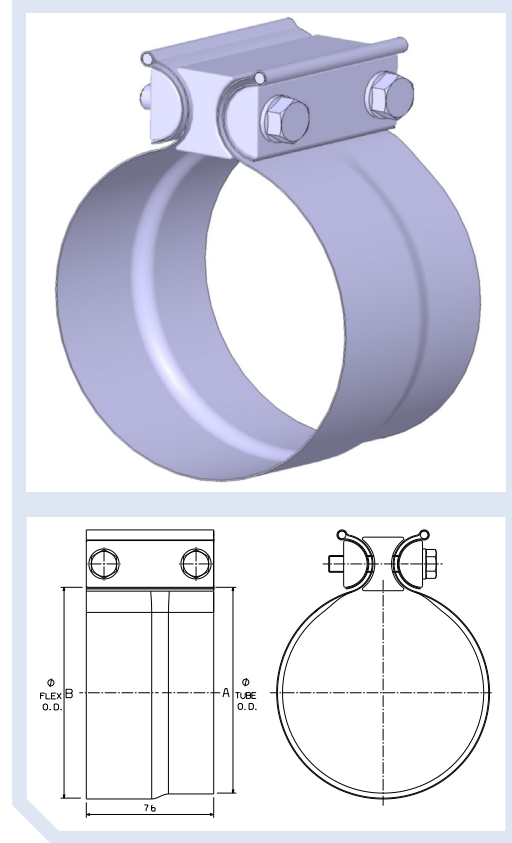
A O.D. Ø TUBE ± 1.0 mm		B O.D. Ø FLEX ± 1.0 mm	
mm	Inch	mm	Walker ref. no
51	2	55	61782
57	2¼	62	61783
64	2½	69	61784
70	2¾	75	61785
76	3	81	61786
89	3½	94	61788
102	4	107	61789
114	4½	119	61790
127	5	132	61791
152	6	157	61792

Stock code: 24

The simple, effective way to connect exhaust tube and flexible tube.
Exclusive design ensures fast, easy and accurate installation.

Application

- Connecting tube and flexible pipe together.
- Connecting elbows and flexible pipe together.
- Connecting stack, tail pipes, elbows or connectors to rigid tube.



Recommended TORQUE

Ft-lbs	Nm
45 to 60	60 to 80

VOLVO/RENAULT - CLAMP

mm	Walker ref. no
30-33	81829
35-38	81833
39-42	81821
44-45	81823
45-48	81817
48-51	81811
52-55	81813
54-55	81866
55-58	81815
61-62	81872
62-65	81835
90-94	81839
104-108	81841

Stock code: 24

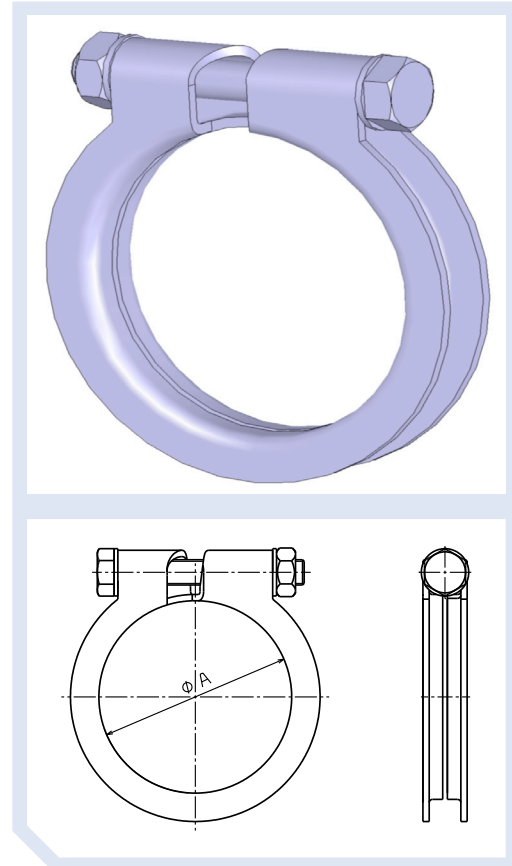
The simple, effective way to connect exhaust component.
Exclusive design ensures fast, easy and accurate installation.

APPLICATION

Exhaust pipe clamps that securely and reliably connect pipes which fit into each other. The self adjusting design compensates for pipe connections that are subject to extreme thermal fluctuations and therefore are especially suitable for connecting exhaust pipes and silencers in automotive applications.

TECHNICAL FEATURES

1. One piece clamp band offers a uniform contact pressure on the pipe circumference, ensuring high sealing efficiency.
2. Self-adjusting design which compensates for temperature fluctuations.
3. Compact design means ease of assembly even in confined spaces.
4. Rounded band edges ensures tube protection and protection against injury.
5. Material W1 - Corrosion resistance in salt spray testing - min. 144h

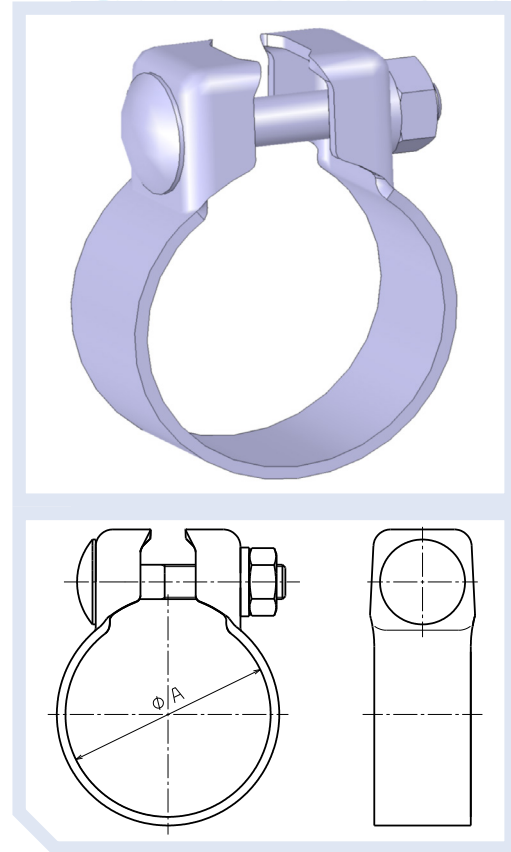


VAG CLAMPS

Colliers | Schellen | Klemmen

mm	Walker ref. no
38,5	81980
41,5	81981
42,5	81982
44,5	80474
45,5	81983
46,7	81984
48,5	81985
49,5	81986
51,5	81987
52,3	81988
53,5	81989
54,5	81990
55,5	81991
58,5	80323
59,5	80249
62,5	80365
64,5	80251

Stock code: 24

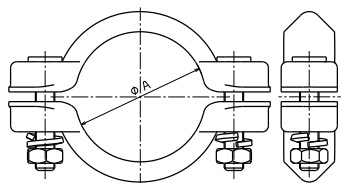
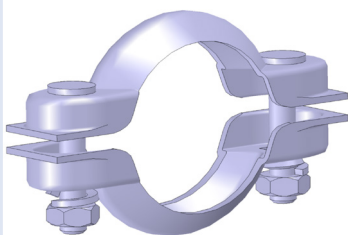


SPECIAL CLAMPS

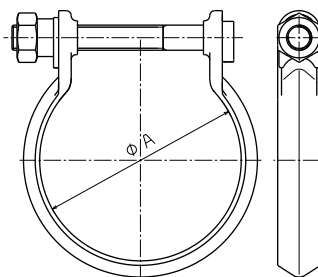
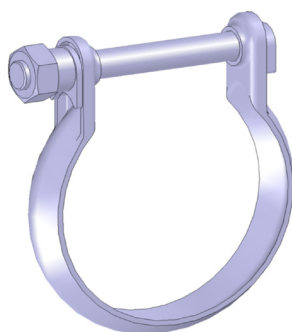
Ø A Clamping mm	Walker ref. no.		
	1/2	Ring	Ring + Gasket
44,6 - 48	82526		
48,5 - 50	82486		
53,5 - 55	82487	80909	
57,5 - 59	86019	80562	
61,5 - 63	86206	80732	
65,5 - 67	82501	80439	80739
68,5 - 70	82516	80438	80550
72,5 - 74	86170	80781	
77,5 - 79		80477	
79,5 - 81	86219	80464	
89,5 - 91		80910	

Stock code: 24

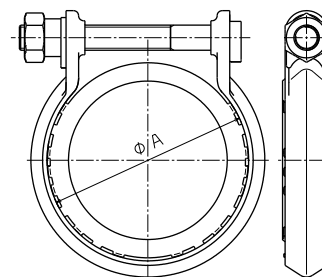
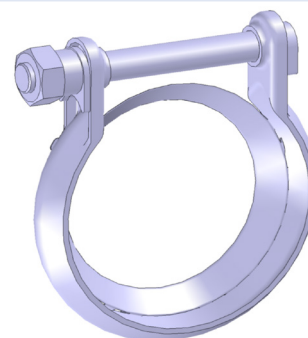
1/2 CLAMP



RING CLAMP



RING CLAMP w/ GASKET

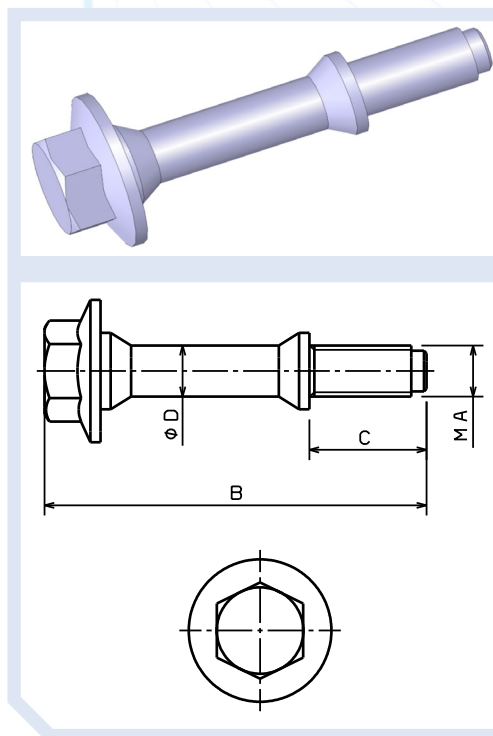


SPECIAL BOLTS

Vis Spéciales | Spezial Schrauben | Speciale Bouten

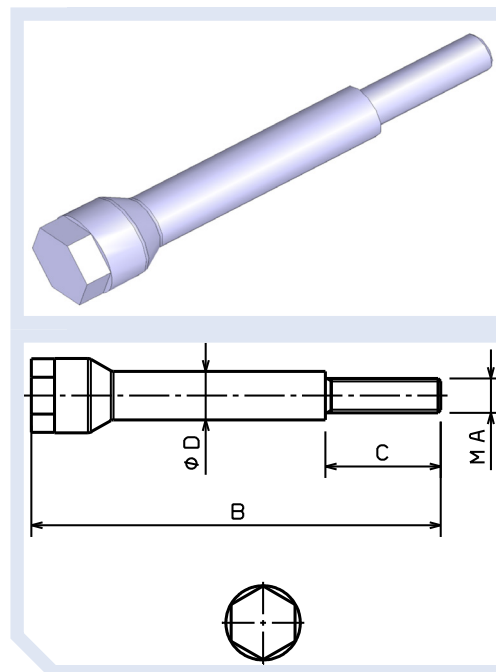
	MA x B	C	D	
Make	mm	mm	mm	Walker ref. no
Honda	M8 x 69	20	8	83169
Suzuki	M10 x 75	23	10	83170

Stock code: 25



	MA x B	C	D	
Make	mm	mm	mm	Walker ref. no
Peugeot/Citroën	M7 x 80	31	7	83164
Citroën	M6 x 67	15	8.5	83180
Citroën	M6 x 71	15	8.5	83181
Citroën	M6 x 56	10	8.5	83196

Stock code: 25

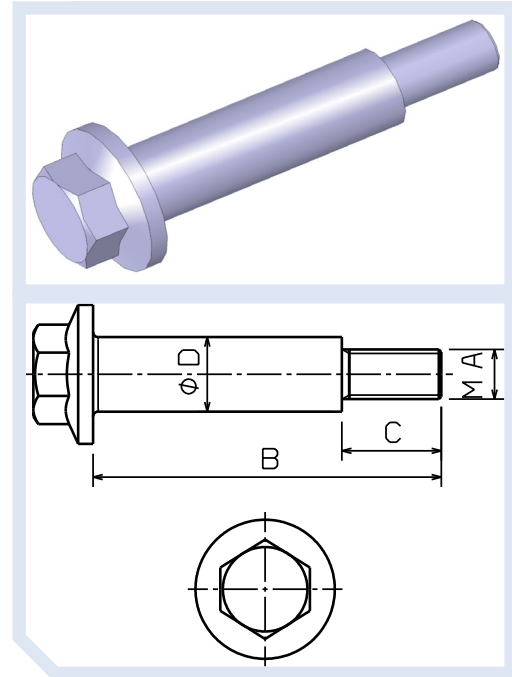


SPECIAL BOLTS

Vis Spéciales | Spezial Schrauben | Speciale Bouten

	MA x B	C	D	
Make	mm	mm	mm	Walker ref. no
Opel Kadett	M10 x 73	18	12.5	83149
Opel	M10 x 57	20	13	83155
Ford	M10 x 70	20	15	83193
Opel Vectra	M8 x 62	20	10	83194

Stock code: 25

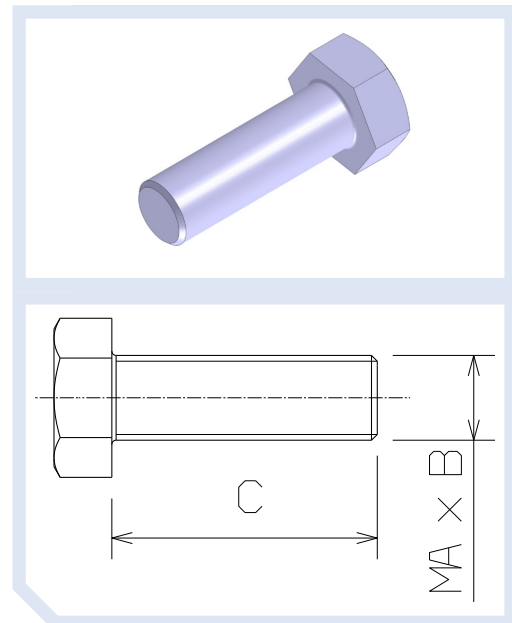


UNIVERSAL BOLTS

MA x B	C	
mm	mm	Walker ref. no
M10 x 1.25	40mm	83162
M8 x 1.25	25mm	83113
M8 x 1.25	16mm	83110
M6 x 1.0	30mm	83105
M6 x 1.0	12mm	83101*

Stock code: 25

*Type of Flange Bolt

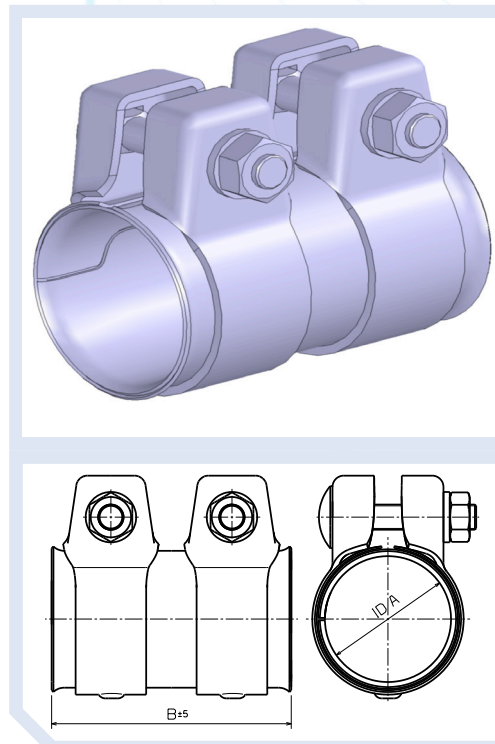


CONNECTION PIPES VAG TYPE*

ID A	B ±5		
mm	mm	Walker ref. no	VAG OE No.
36	95	80707	1.565.492
38	95	80708	8Z0.253.141
40	90	80710	1S0.253.141
40	125	80709	
43	90	80711	1.556.170
43	125	86142	191.253.141.A
45	95	80713	1H0.253.141.B
45	125	80712	1736.05
48	90	80715	6.158.964
48	125	80714	
50	90	86152	893.253.139
50	125	86150	191.253.141.F
52	90	80724	6.054.349
54	90	80716	
55	80	80190	1.048.509
55	95	80250	357.253.141.A
55	125	80138	1H0.253.141.A
58	90	80717	
60	90	80718	1K0.253.141.H
60	125	80719	893.253.139.C
65	80	80720	1K0.253.141.J
65	90	80722	1K0.253.141.P
65	125	80721	8L9.253.139.A
70	80	80723	18.30.7.560.780

Stock code: 27

*Aluminised



CONNECTION PIPES WITHOUT CLAMPS*

ID A	B	
mm	mm	Walker ref. no
35.5	110	82432
38.5	115	82477
41.5	110	82591
42**	160	86205
42.5	110	82480
44.5	90	82590
45	95	86132
45.5	110	80370
45.5	135	82463
48.5	110	80371
48.5	130	82546
50.5	125	82553
52	100	32016
52.5	110	80375
52.5	125	82593
54.5	90	82466
55.5	110	80372
60.5	110	80373
60.5	125	82594
64	150	32041
76.7	190	32055

Stock code: 27

Thickness of the pipes 1.5mm

*Aluminised

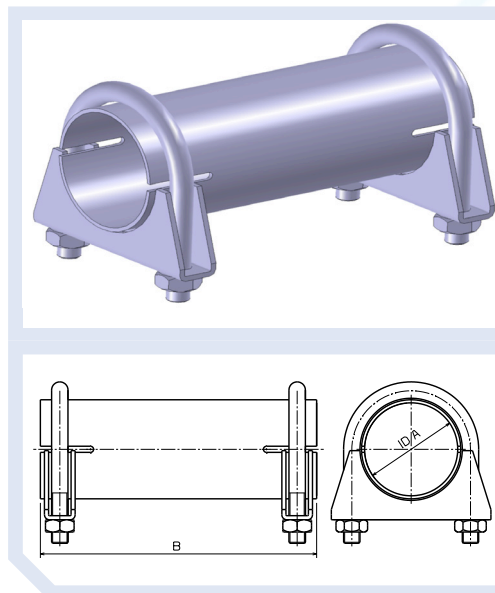
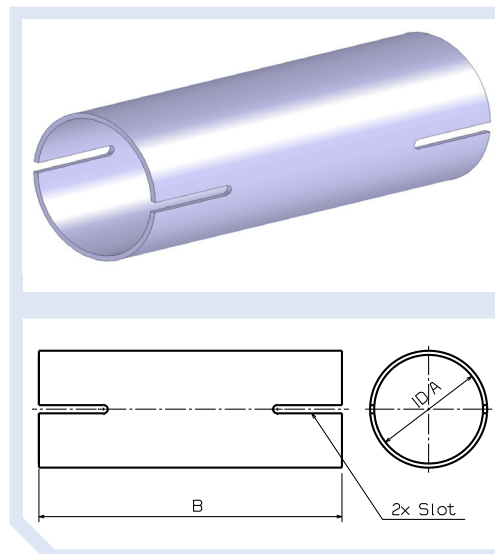
** Connection pipe without slots.

CONNECTION PIPE AND U-CLAMPS M10*

ID A	B	
mm	mm	Walker ref. no
35.5	110	86035
38.5	115	86038
41.5	110	86041
42.5	110	86042
44.5	90	86044
45.5	135	86045
48.5	130	86048
50.5	125	86050
52.5	125	86052
54.5	90	86054
60.5	125	86060

Stock code: 27

*Aluminised

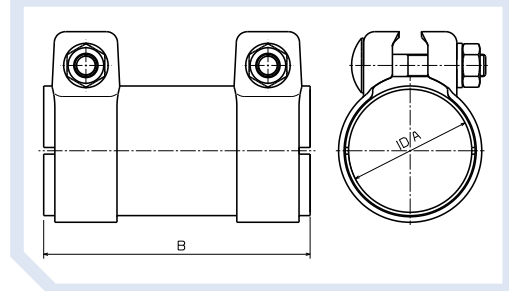
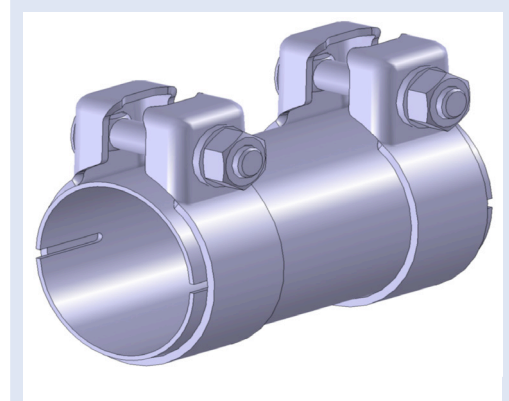


CONNECTION PIPE AND VAG CLAMPS*

mm	mm	Walker ref. no
35.5	110	86135
38	115	86138
41.5	110	86141
44.5	90	86144
45.5	135	86145
48.5	130	86148
50	95	86130
55	90	86154
60	120	86160

Stock code: 27

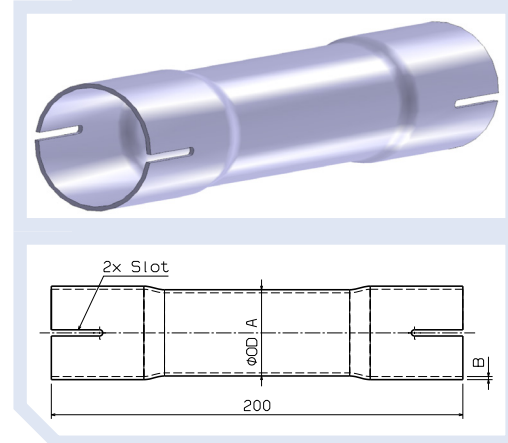
*Aluminised



CONNECTION PIPE LENGTH 20 cm Turbulures de Raccordement 20 cm | Rohrverlängerungen 20 cm | Verlengstukken 20 cm

Outer Diameter Diamètre Extérieur Aussendurchmesser Buitendiameter	Wall Thickness Epaisseur Wanddicke Wanddikte	
Ø OD A	B	
mm	mm	Walker ref. no
35	1.2	07155
38	1.2	07157
42	1.2	07159
43	1.2	07161
45	1.2	07163
48	1.5	07165
50.8	1.5	07167
54	1.5	07169
57	1.5	07171
60	1.5	07173

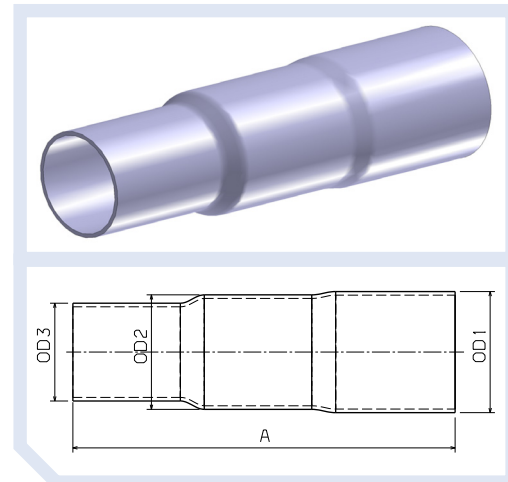
Stock code: 71



ALUMINISED 3-STEP REDUCTION PIPE

OD 1		OD 2	OD 3	Thickness	A	
mm	inch	mm	mm	mm	mm	Walker ref. no
50.8	2	48	41	1.5	160	32018
63.5	2 ½	57	50.8	1.5	200	32040
76.2	3	67	63.5	1.5	195	32048

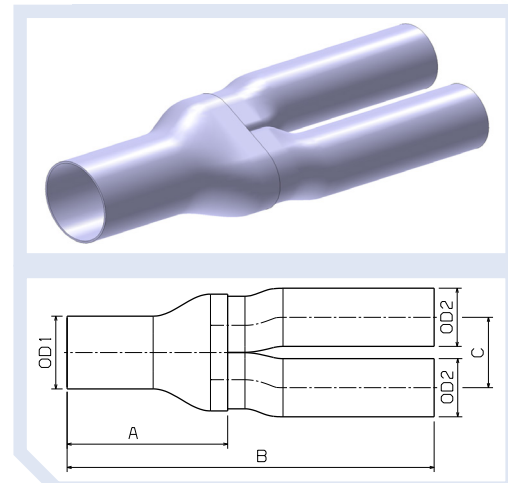
Stock code: 61



ALUMINISED UNIVERSAL Y-PIPE

OD 1		OD 2	A	B	C	Thickness	
mm	inch	mm	mm	mm	mm	mm	Walker ref. no
63.5	2 ½	50.8	140	320	61.5	1.5	32043

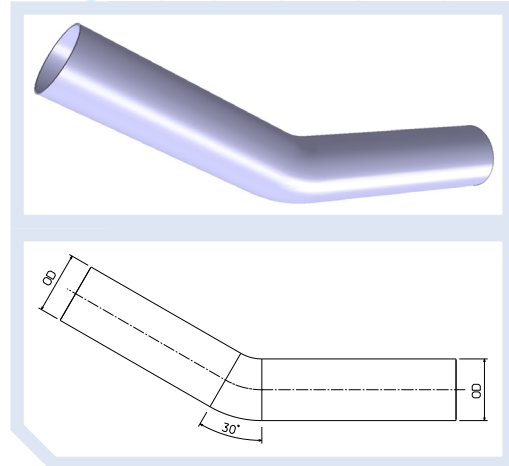
Stock code: 61



ANGLE 30°

Ø O.D. - O.D.		Thickness	Total length		Walker ref. no
mm	Inch		mm	mm	
76	3	1,5	500	07039	
89	3½	1,5	500	07040	
114	4½	2,0	500	07044	

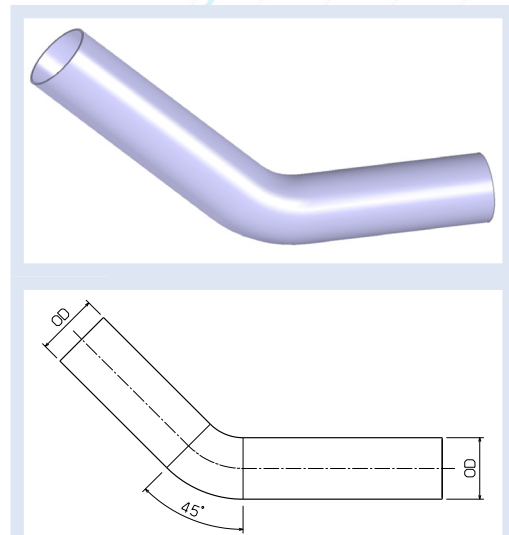
Stock code: 61



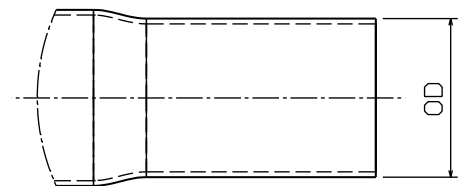
ANGLE 45°

Ø O.D. - O.D.		Thickness	Total length		Walker ref. no
mm	Inch		mm	mm	
32	1¼	1,5	250	07006	
35	1⅜	1,5	260	07008	
38	1½	1,5	270	07010	
41*	1⅝	1,5	420	07012	
44,5*	1¾	1,5	440	07014	
47,5*	1⅞	1,5	460	07016	
51**	2	1,5	480	07018	
54	2⅛	1,5	500	07020	
60	2⅜	1,5	400	07022	

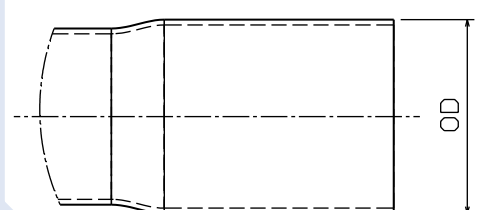
Stock code: 61



* TUBE OD REDUCTION



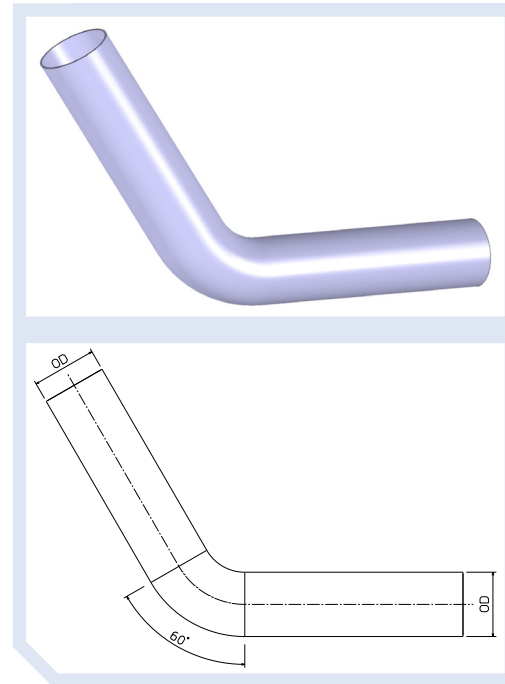
** TUBE OD EXPANSION



ANGLE 60°

Ø O.D. - O.D.		Thickness	Total length	
mm	Inch	mm	mm	Walker ref. no
76	3	1,5	600	07046
101,5	4	2,0	620	07050
114	4½	2,0	620	07052

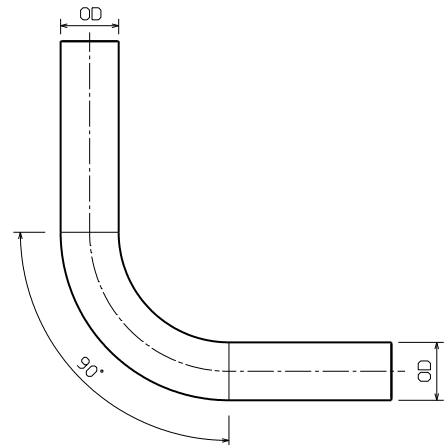
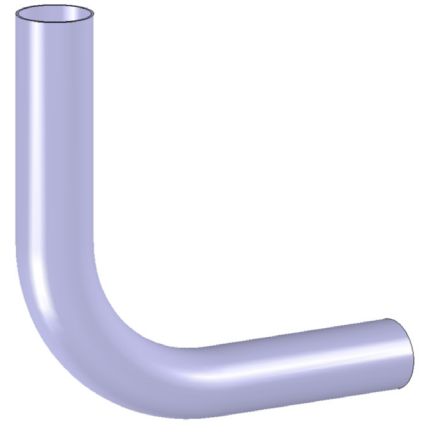
Stock code: 61



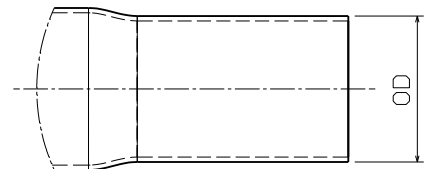
ANGLE 90°

Ø O.D. - O.D.		Thickness	Total length		Walker ref. no
mm	Inch		mm	mm	
32	1¼	1,5	350	07005	
35	1⅜	1,5	380	07007	
38	1½	1,5	400	07009	
41.5*	1⅝	1,5	420	07011	
44.5*	1¾	1,5	440	07013	
47.5*	1⅞	1,5	460	07015	
51	2	1,5	480	07017	
54	2⅛	1,5	510	07019	
57*	2¼	1,5	540	07021	
60	2⅜	1,5	650	07023	
64	2½	1,5	600	07025	
70	2¾	1,5	500	07027	
76 / 76,5**	3	1,5	550	07029	
89 / 90,5**	3½	1,5	550	07031	

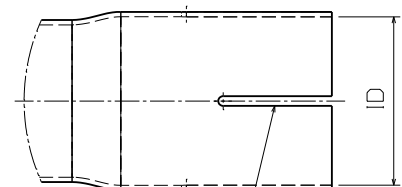
Stock code: 61



* TUBE OD REDUCTION



** ONE SIDE OF TUBE HAS EXPANSION AND SLOTS



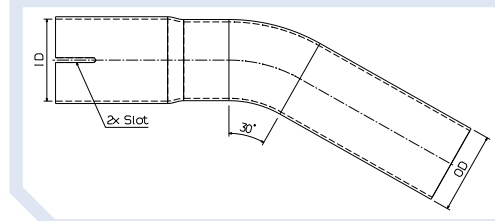
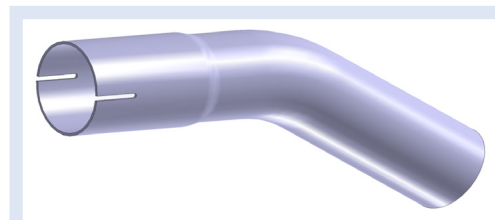
Slots 4x 90°

ANGLE 30°

Ø I.D.		Ø O.D.		Thickness	Total length	
mm	mm	Inch	mm	mm	mm	Walker ref. no
51.3	50.8	2	1.5	265		32020
64	63.5	2 ½	1.5	270		32032
76.7	76.2	3	1.5	325		32049*

Stock code: 61

* 4 x Slot

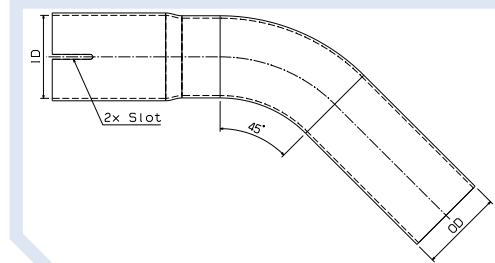


ANGLE 45°

Ø I.D.		Ø O.D.		Thickness	Total length	
mm	mm	Inch	mm	mm	mm	Walker ref. no
51.3	50.8	2	1.5	280		32021
64	63.5	2 ½	1.5	310		32033
76.7	76.2	3	1.5	370		32050*

Stock code: 61

* 4 x Slot

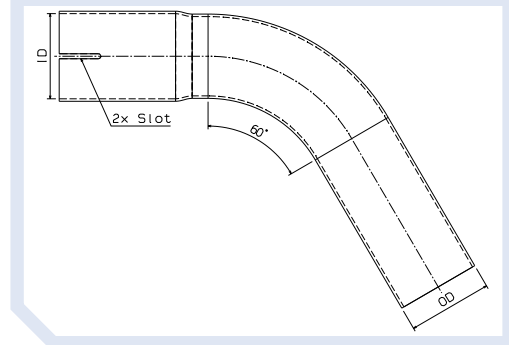
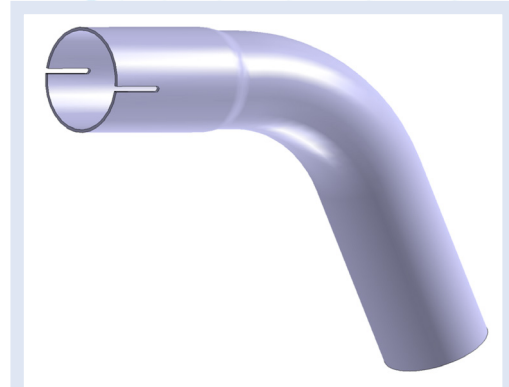


ANGLE 60°

Ø I.D.		Ø O.D.		Thickness	Total length	
mm	mm	Inch	mm	mm	mm	Walker ref. no
51.3	50.8	2	1.5	300		32022
64	63.5	2 ½	1.5	335		32034
76.7	76.2	3	1.5	420		32051 *

Stock code: 61

* 4 x Slot

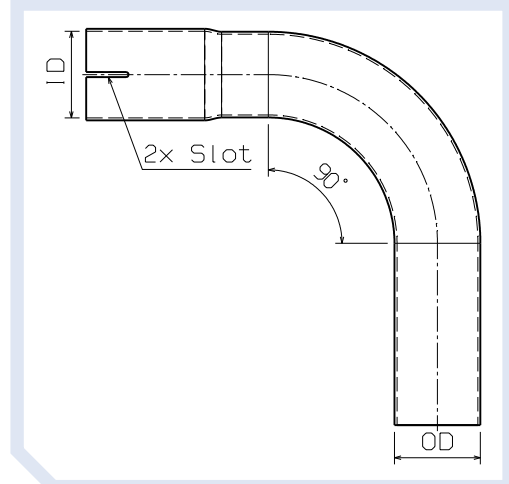


ANGLE 90°

Ø I.D.		Ø O.D.		Thickness	Total length	
mm	mm	Inch	mm	mm	mm	Walker ref. no
51.3	50.8	2	1.5	375		32019
64	63.5	2 ½	1.5	410		32035
76.7	76.2	3	1.5	510		32052 *

Stock code: 61

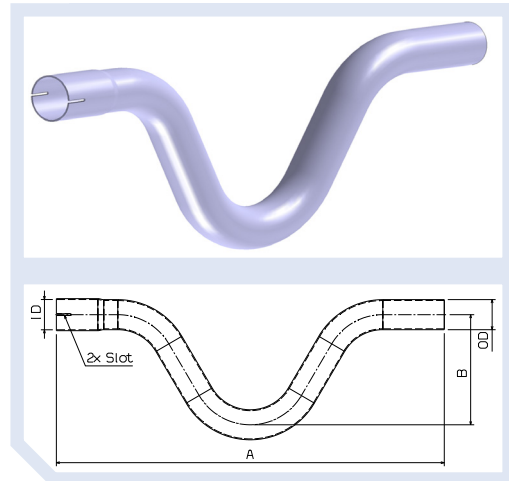
* 4 x Slot



ALUMINISED OVER AXLE BEND

Ø ID	Ø OD		A	B	Thickness	Total length	
mm	mm	inch	mm	mm	mm	mm	Walker ref. no
51.3	50.8	2	655	187	1.5	845	32023
64	63.5	2½	894	168	1.5	1000	32039
76.7	76.2	3	885	183	1.5	1000	32053

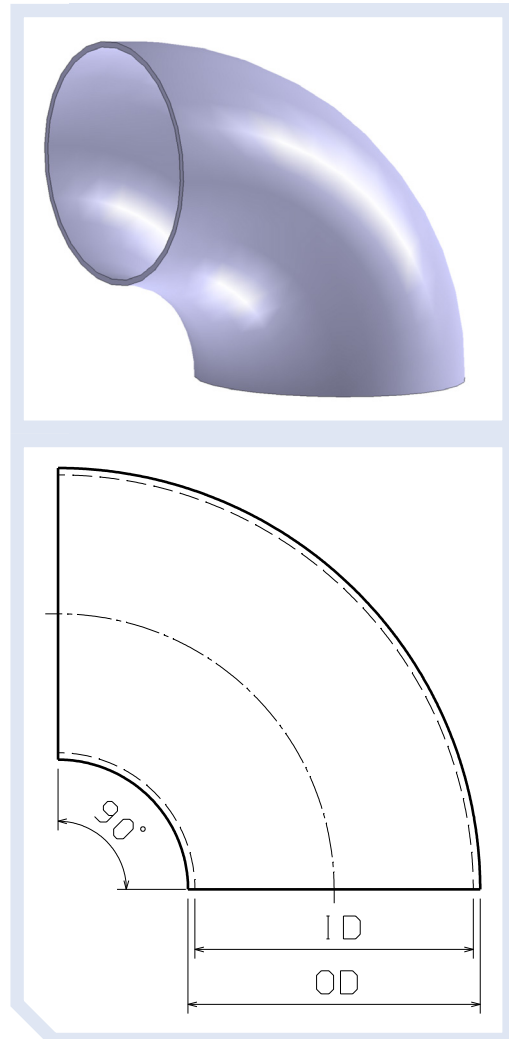
Stock code: 61/62



ALUMINISED EXHAUST BENDS 90° FOR WELDING

Ø ID	Ø OD		Thickness	Total length	
mm	mm	inch	mm	mm	Walker ref. no
60.5	63.5	2½	1.5	95	32042
73.2	76.2	3	1.5	95	32054
98.5	101.5	4	1.5	114	07033
111	114	4½	1.5	160	07065

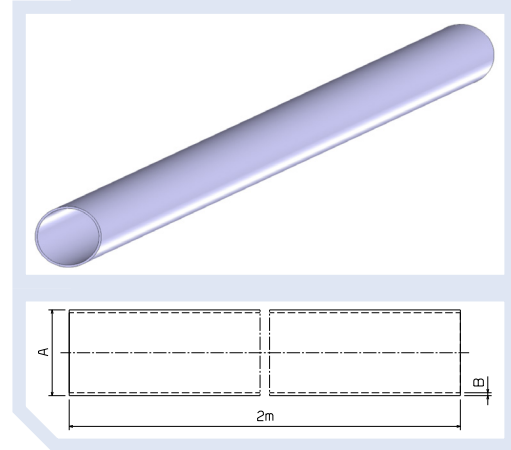
Stock code: 61



ALUMINISED

Outer Diameter Diamètre Extérieur Aussendurchmesser Buitendiameter	Wall Thickness Epaisseur Wanddicke Wanddikte	
Ø A	B	
mm	mm	Walker ref. no
32	1.5	09770
35	1.5	09802
38	1.5	09887
40	1.5	09805
42	1.5	09889
45	1.5	09891
48	1.5	09809
50	2	09811
51	2	09778
51	1.5	09895
54	2	09812
54	1.5	09900
57	1.5	09780
60	1.5	09810
64	1.5	09782
70	1.5	09813
76	1.5	09784
80	2	09814
89	1.5	09785
102	2	09786
108	2	09787
114	2	09788

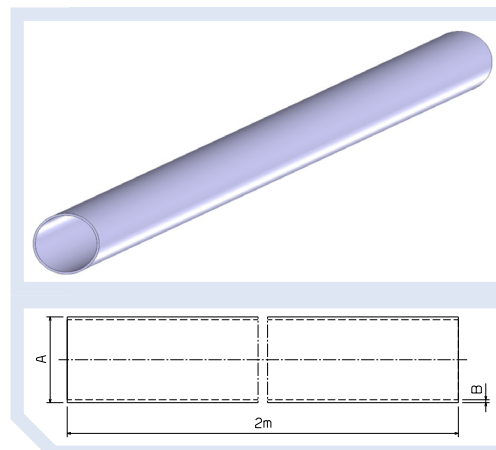
Stock code: 66



MILD STEEL

Outer Diameter Diamètre Extérieur Aussendurchmesser Buitendiameter	Wall Thickness Épaisseur Wanddicke Wanddikte	
Ø A	B	
mm	mm	Walker ref. no
25	1.5	09925
29	1.5	09929
32	1.5	09932
35	1.5	09935
38	1.5	09938
41	1.5	09941
44	1.5	09944
48	1.5	09948
51	1.5	09951
54	1.5	09954
57	1.5	09957
60	1.5	09960
64	1.5	09964
70	1.5	09970
76	1.5	09976
79	1.5	09981
89	1.5	09989
102	1.5	09991

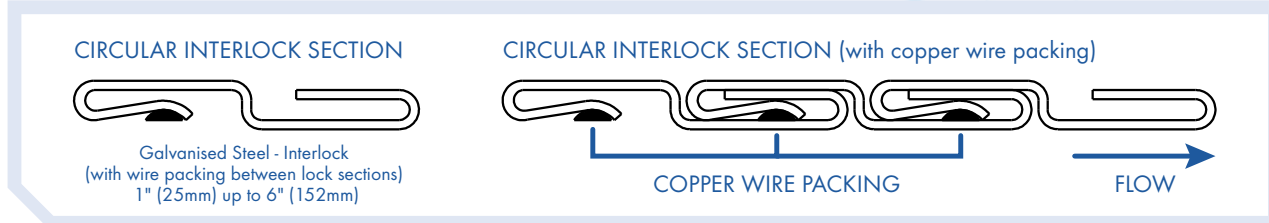
Stock code: 66



FLEXIBLE TUBING: CIRCULAR PROFILE

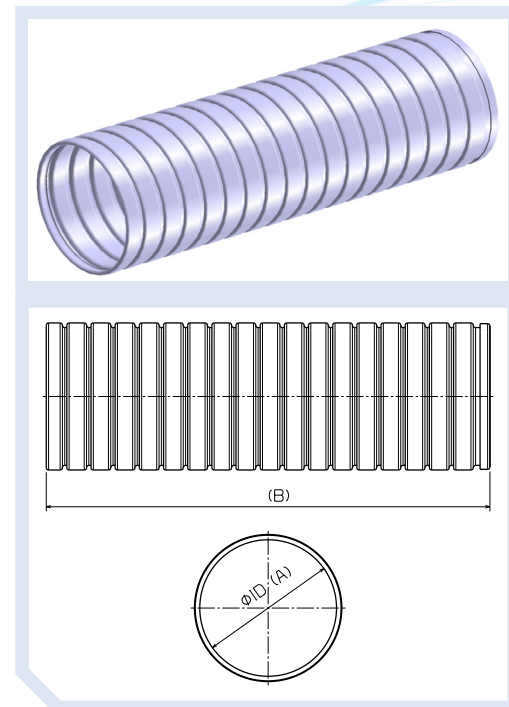
Circular Interlock section with copper wire packing

- **Advantages:**
Offers better sealing/leakage characteristics for exhaust gases.
- **Disadvantages:**
Stiffer flex section, less flexibility to absorb vibrations and movement, due to the copper wire packing between the interlock sections.



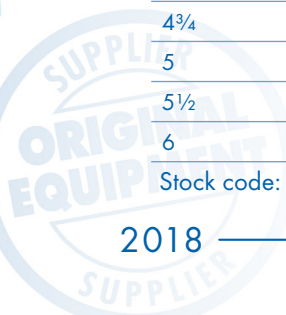
GALVANISED

Ø ID A		B Length: 2000 mm
inch	mm	Walker ref. no
1	25	09901
1 1/8	29	09902
1 1/4	32	09903
1 3/8	35	09904
1 1/2	38	09905
1 5/8	41	09906
1 3/4	44	09907
1 7/8	48	09908
2	51	09909
2 1/8	54	09910
2 1/4	57	09911
2 3/8	60	09912
2 1/2	64	09913
2 5/8	67	09914
2 3/4	70	09915
2 7/8	73	09896
3	76	09916
3 1/8	79	09917
3 1/4	83	09918
3 3/8	86	09926
3 1/2	89	09919
3 5/8	92	09927
3 3/4	95	09928
3 7/8	98	09933
4	102	09920
4 1/8	105	09934
4 1/4	108	09921
4 1/2	114	09922
4 3/4	121	09923
5	127	09924
5 1/2	140	09897
6	152	09898



Temperature limit for Galvanised Steel Circular: 230 °C

Stock code: 66

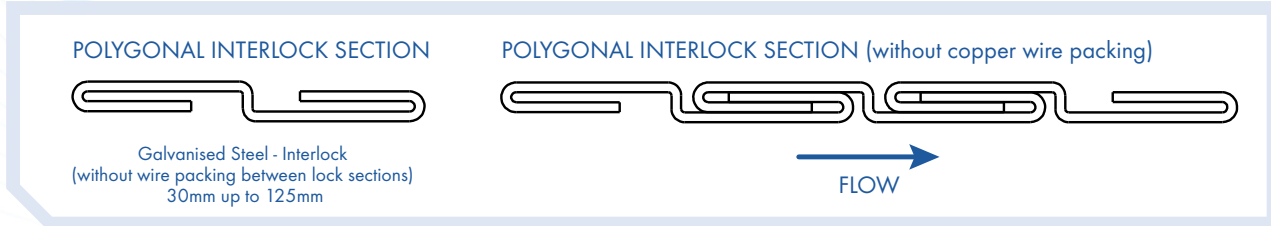


FLEXIBLE TUBING: POLYGONAL PROFILE 1.000 mm

Polygonal Interlock section without copper wire packing

• **NOTE:**

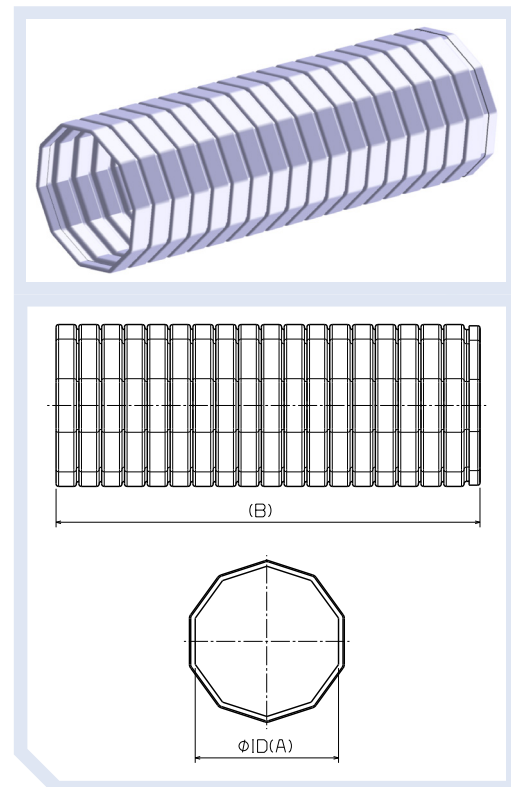
Has a cosmetically better appearance compared to circular section tubing.



GALVANISED

Ø ID A		B Length: 1000 mm
inch	mm	Walker ref. no
1 ¹ / ₁₆	30	09820
1 ³ / ₁₆	35	09821
1 ¹ / ₂	40	09822
1 ¹¹ / ₁₆	42	09823
1 ³ / ₄	45	09824
1 ⁷ / ₈	48	09825
2	50	09826
2 ³ / ₄	55	09827
2 ³ / ₈	60	09828
2 ¹ / ₁₆	65	09829
2 ³ / ₄	70	09830
3	75	09839
3 ³ / ₈	80	09832
3 ³ / ₈	85	09833
3 ⁷ / ₁₆	90	09840
3 ¹⁵ / ₁₆	100	09841
4 ³ / ₄	120	09836
4 ¹⁵ / ₁₆	125	09837

Stock code: 63



Temperature limit for Galvanised Steel Polygonal: 230 °C

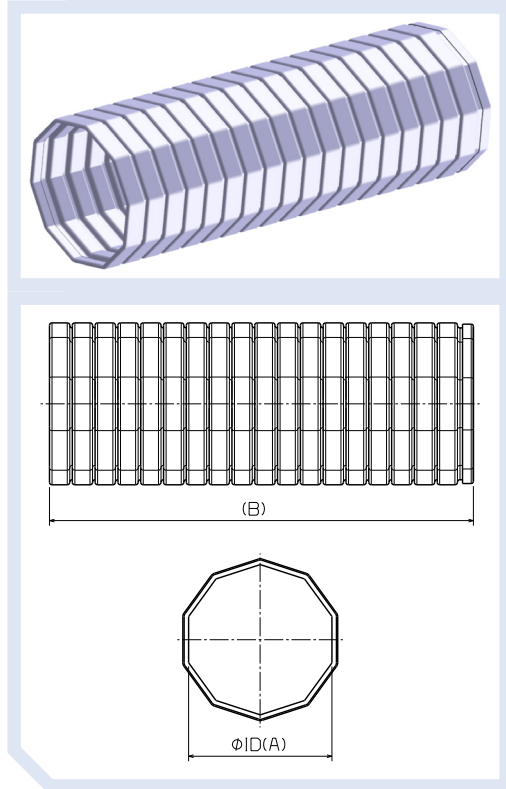


FLEXIBLE TUBING: POLYGONAL PROFILE 2.000 mm

GALVANISED

Ø ID A		B Length: 2000 mm
inch	mm	Walker ref. no
1 ¹ / ₁₆	30	10820
1 ³ / ₁₆	35	10821
1 ¹ / ₂	40	10822
1 ¹ / ₄	42	10823
1 ³ / ₄	45	10824
1 ⁷ / ₈	48	10825
2	50	10826
2 ³ / ₄	55	10827
2 ³ / ₈	60	10828
2 ¹ / ₁₆	65	10829
2 ³ / ₄	70	10830
3	75	10839
3 ³ / ₈	80	10832
3 ³ / ₈	85	10833
3 ¹ / ₁₆	90	10840
3 ¹⁵ / ₁₆	100	10841
4 ³ / ₄	120	10836
4 ¹⁵ / ₁₆	125	10837

Stock code: 67

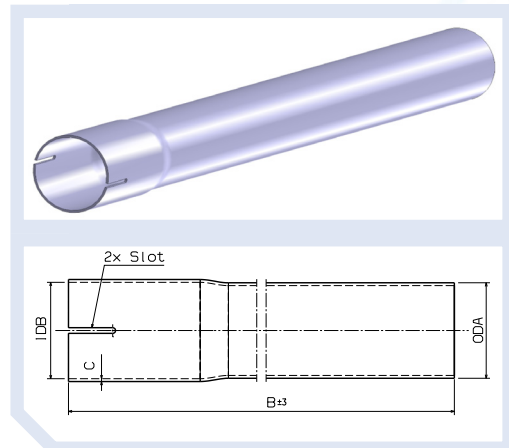


Temperature limit for
Galvanised Steel Polygonal: 230 °C

Inside Diameter Diamètre intérieur Innendurchmesser Binnendiameter	Outer Diameter Diamètre Extérieur Aussendurchmesser Buitendiameter	Wall Thickness Epaisseur Wanddicke Wanddicke	Length	
Ø ID B	Ø OD A	C	B	
mm	mm	mm	mm	Walker ref. no
28.5	28	1.5	500	80911
32.5	32	1.5	500	80913
35.5	35	1.2	500	07045
38.5	38	1.2	500	07047
42.5	42	1.2	500	07049
43.5	43	1.5	500	07051
45.5	45	1.2	500	07053
48.5	48	1.5	500	07055
51.5	51	1.5	500	07057
54.5	54	1.5	500	07058
57.5	57	1.5	500	07059
60.5	60	1.5	500	07060
64	63.5	1.5	500	32031
76.7	76.2	1.5	500	32046*
51.3	50.8	1.5	1000	32015
64	63.5	1.5	1000	32030
76.7	76.2	1.5	1000	32045*

Stock code: 62

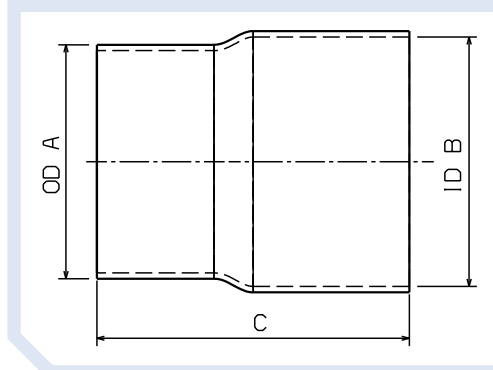
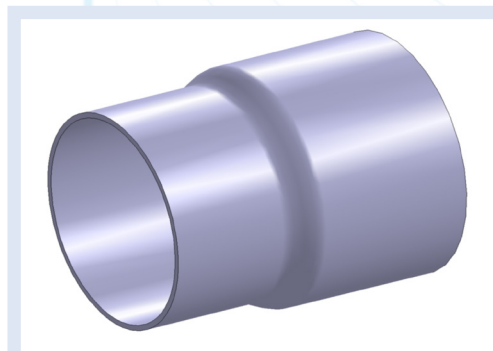
*4x Slot



WITHOUT SLOTS

Ø OD A Outside	Ø ID B Inside	C Length	
mm	mm	mm	Walker ref. no
25	28	75	10692
28	32	75	10693
32	35.5	75	07105
35	38.5	75	07107
38	42	80	07109
41.5	45	80	07111
44.5	48	80	07113
47.5	50.5	80	07115
50	54.5	80	07117
54	58	80	07119
57	61	80	07121
60	64	80	07123
70	76	80	10694

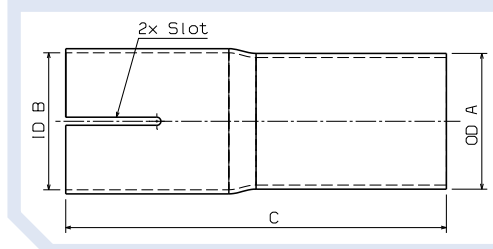
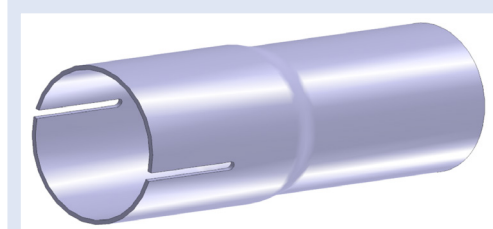
Stock code: 71



WITH SLOTS

Ø OD A Outside	Ø ID B Inside	C Length	
mm	mm	mm	Walker ref. no
48	50.5	140	07108
50	48.5	140	07106
50	50.5	140	07104
50	54.5	140	07102

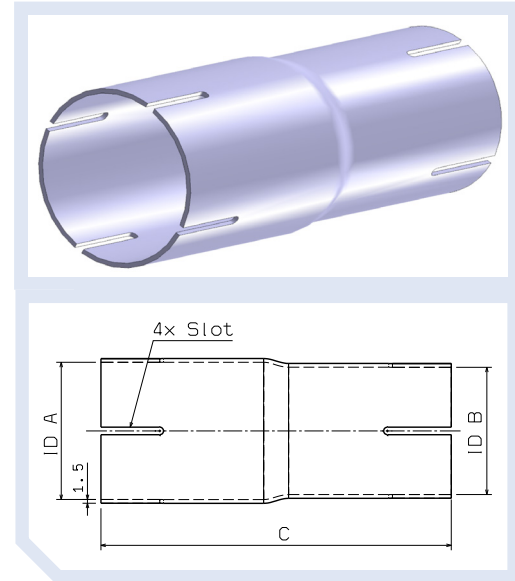
Stock code: 71



WITH SLOTS FROM BOTH SIDES

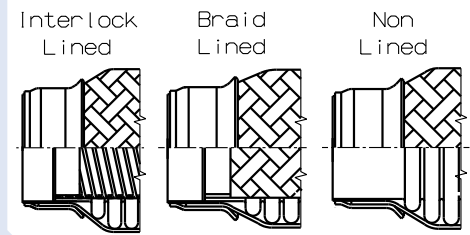
Ø ID A Inside	Ø ID B Inside	C Length	
mm	mm	mm	Walker ref. no
55	51	140	10711
61	57	140	10712
69	64	140	10713
81	76	140	10714

Stock code: 71



Lining types

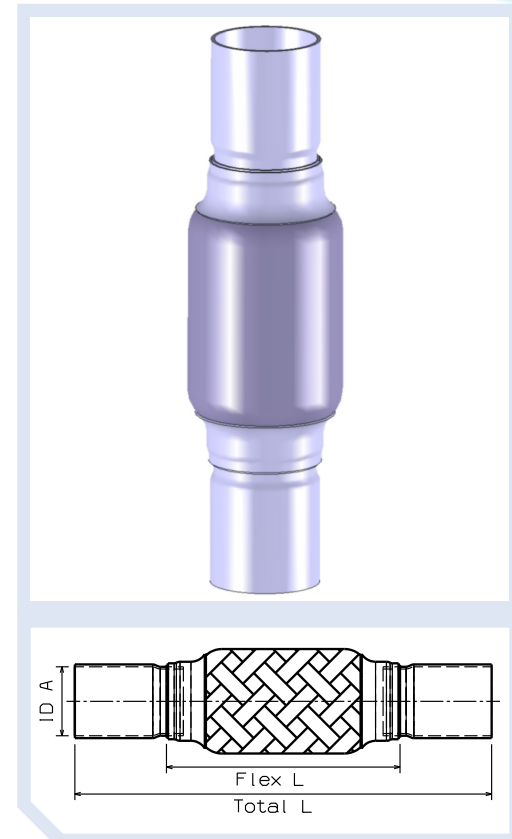
- **Interlock Lined** - this part is used down stream from cat and manifold in lower heat applications and suitable for most general applications.
- **Braid Lined** - this part is used higher heat applications, closer to the cat/manifold and where there are noise whistling problems two into one tube applications.
- **Non Lined** - this part is used when flex is very closed to the cat/manifold, high heat applications, severe noise, poor road conditions, problem vehicles.



FLEX WITH PIPES

ID A	Flex L	Total L		
mm	mm	mm	Quality	Walker ref. no
25.5	125	155	Interlock	04641
35.5	203	254	Braid	10399
42.5	158	272	Interlock	10396
45.5	165	272	Interlock	52134
45.5	210	322	Braid	08920
45.5	210	373	Interlock	13488
48.5	105	160	Braid	10407
48.5	210	245	Braid	08922
48.5	158	272	Interlock	10397
48.5	225	275	Braid	16365
48.5	210	410	Braid	01087
50.5	158	272	Braid	10382
50.5	208	322	Braid	10398
51.4	254	282	Braid	10409
51.4	180	430	Braid	12275
54.6	230	370	Braid	10412
57.8	160	203.2	Braid	10413
60.7	203.2	254	Braid	12272

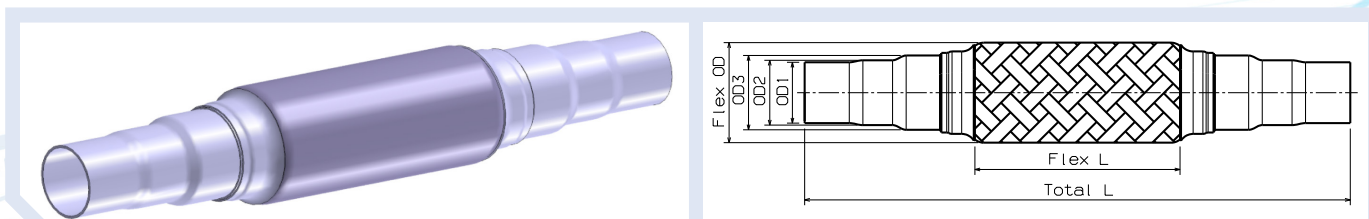
Stock code: 61



FLEX 3-STEP PIPES - NON LINED

OD 1	OD 2	OD 3	Flex OD	Flex L	Total L		
mm	mm	mm	mm	mm	mm	Quality	Walker ref. no
45	48	55	74	183	403	Non Lined	08924

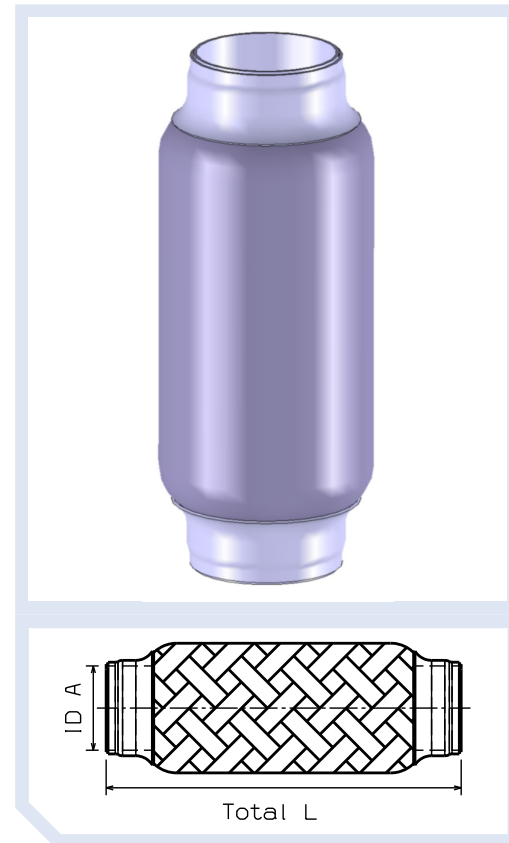
Stock code: 61



FLEX WITHOUT PIPES

ID A	Total L		
mm	mm	Quality	Walker ref. no
35.5	203.2	Braid	08925
38.5	152.4	Braid	08926
42.5	203.2	Braid	10402
45.5	90	Braid	10405
45.5	98	Interlock	05251
45.5	101.6	Braid	10400
45.5	130	Interlock	10383
45.5	152.4	Braid	10401
45.5	190	Braid	10406
45.5	192	Interlock	05249
45.5	230	Braid	10403
45.5	262	Braid	10404
48.5	208	Interlock	10384
50.5	95	Braid	10385
50.5	101.6	Interlock	07192
50.5	254	Braid	10387
50.5	282	Braid	10386
51.4	101.6	Interlock	08949
51.4	101.6	Braid	08934
51.4	152.4	Braid	10408
51.4	165	Braid	52133
51.4	188	Interlock	05320
51.4	203.2	Braid	10410
51.4	230	Braid	10411
51.4	254	Braid	08933
54.6	105	Interlock	10388
54.6	152.4	Braid	08939
54.6	190	Interlock	05321
54.6	203.2	Braid	08937
54.6	220	Braid	08940
54.6	254	Braid	08938
54.6	282	Braid	08941
55.6	101.6	Braid	08942
55.6	190	Interlock	10391
60.7	116	Interlock	10389
60.7	152.4	Braid	10414
60.7	305	Braid	08944
64.2	203.2	Braid	08945
64.2	254	Braid	08946
73	152.4	Interlock	10390
76.9	203.2	Braid	10415

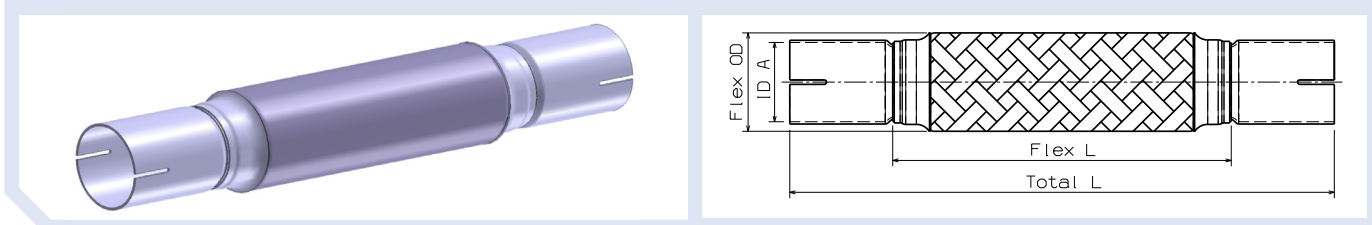
Stock code: 61 & 71



FLEX WITH PIPES AND SLOTS - NON LINED

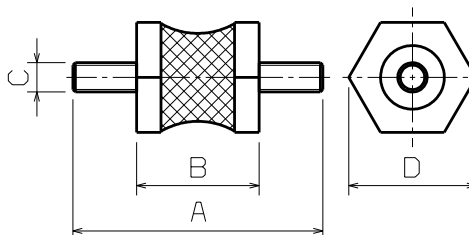
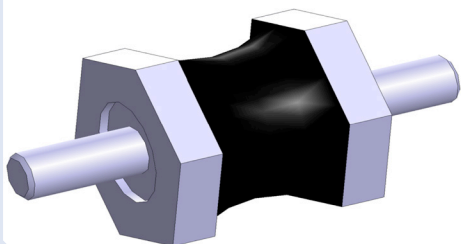
ID A	Flex OD	Flex L	Total L		
mm	mm	mm	mm	Quality	Walker ref. no
54	67	230	370	Non Lined	14052

Stock code: 61

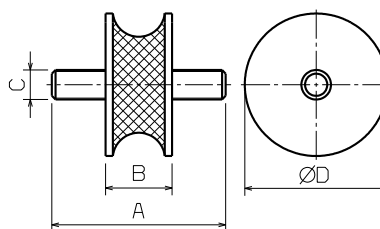
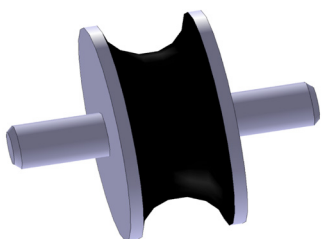


INSULATOR BLOCKS

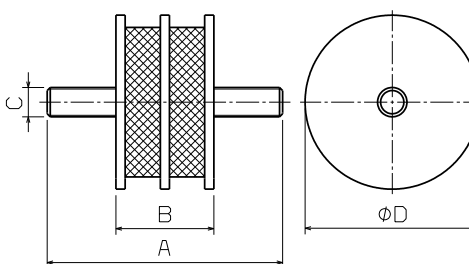
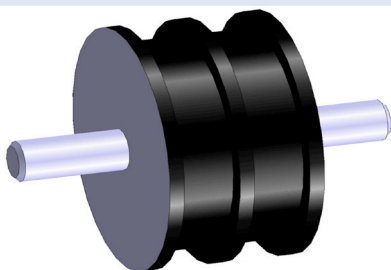
HEXAGONAL



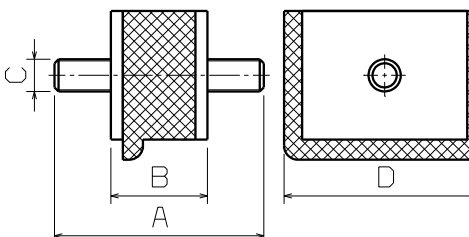
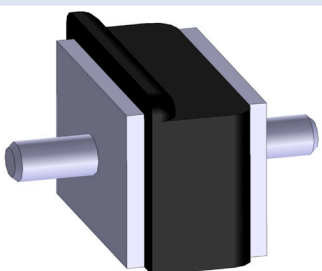
CIRCULAR



CIRCULAR X2



RECTANGULAR



A	B	C	D		
mm	mm	Thread	mm	Type	Walker ref. no
51	25	M6	26	Hexa.	81229
60	24	M8	26	Hexa.	81230
65	27	M8	48.5	Hexa.	81245
64	27	M10	47	Hexa.	84054
77	32	3/16	57	Circul. x2	84080
58	21	M8	29	Circul.	81354
47	18	5/16	34	Circul.	84166
57	21	M8	39	Circul.	84173
52	24	M8	50	Rectang.	81344

Stock code: 22

HOSE CLIPS STAINLESS STEEL

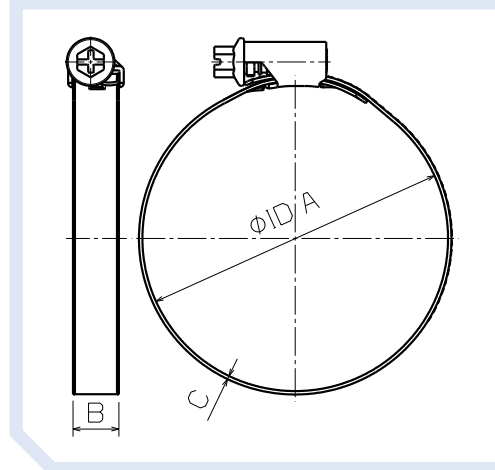
- The effective way for sealing applications under high mechanical loads.
- Exclusive design ensures fast, easy and accurate installation.

Screw size: 7mm.

Recommended tightening torque: 2÷5 Nm.

Ø ID A	B	C	Walker ref. no
mm	mm	mm	
8 - 16	9	0.7	64727
12 - 22	9	0.7	64728
16 - 27	9	0.7	64729
20 - 32	9	0.7	64730
25 - 40	9	0.7	64731
30 - 45	9	0.7	64732
32 - 50	9	0.7	64733
40 - 60	9	0.7	64734
50 - 70	9	0.7	64735
60 - 80	9	0.7	64736
70 - 90	9	0.7	64737
80 - 100	9	0.7	64738
90 - 110	9	0.7	64739
16 - 27	12	0.8	64740
20 - 32	12	0.8	64741
23 - 35	12	0.8	64742
25 - 40	12	0.8	64743
30 - 45	12	0.8	64744
35 - 50	12	0.8	64745
40 - 60	12	0.8	64746
50 - 70	12	0.8	64747
60 - 80	12	0.8	64748
70 - 90	12	0.8	64749
80 - 100	12	0.8	64750
90 - 110	12	0.8	64751
100 - 120	12	0.8	64752
110 - 130	12	0.8	64753
120 - 140	12	0.8	64754
130 - 150	12	0.8	64755
140 - 160	12	0.8	64756
150 - 170	12	0.8	64757
160 - 180	12	0.8	64758
170 - 190	12	0.8	64759

Stock code: 24



HOSE CLIP ASSORTMENT BOX

The effective way for sealing applications under high mechanical loads.
 Exclusive design ensures fast, easy and accurate installation.

Description	Clamping Range	Band width	Quantity	Walker ref. no
	mm	mm		
Hose Clip Assortment Box 120pcs	8-12	9	24	64761
	10-16	9	22	
	12-22	9	24	
	16-27	12	24	
	20-32	12	10	
	25-40	12	16	
	TOTAL			

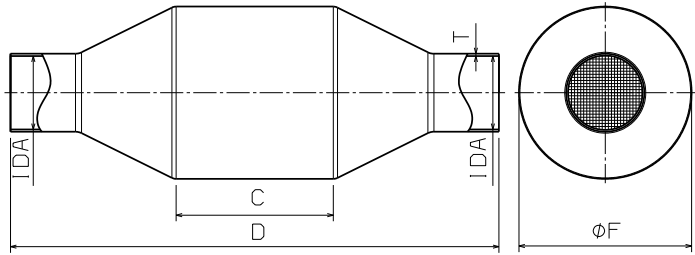
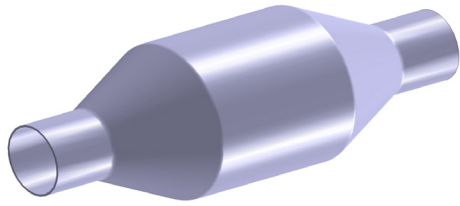
Stock code: 24

Screw size: 7mm.
 Recommended tightening torque: 2÷5 Nm.

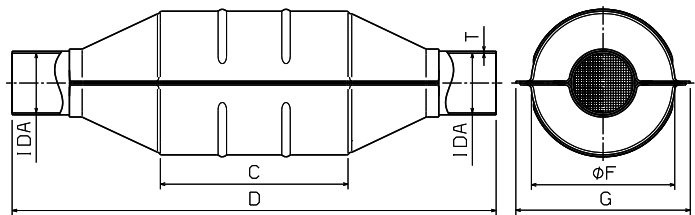
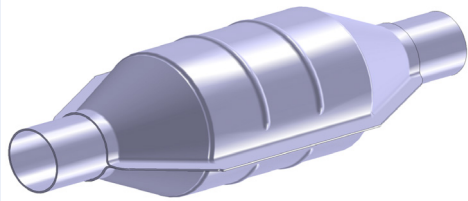


UNIVERSAL CATALYTIC CONVERTER ROUND

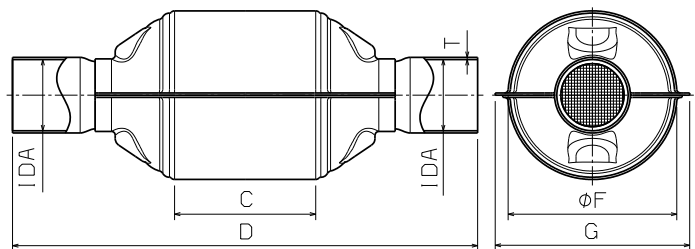
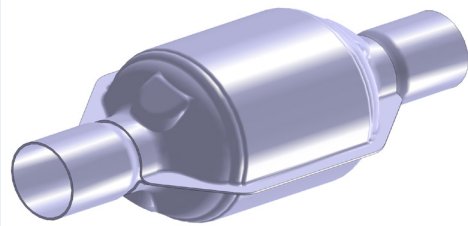
BOX ROLLED



BOX SHELL



BOX SHELL WITH FLATTENING FOR SOCKET

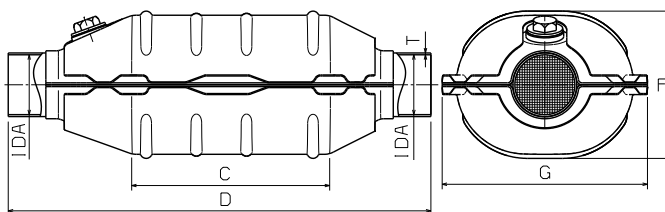
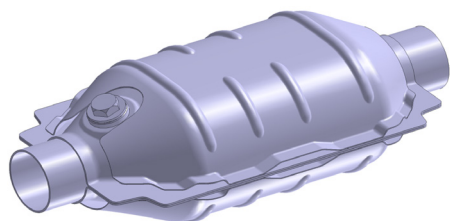


Inlet/ Outlet	Box length	Total length	Box Ø OD	Box Width	Thickness Tube	Type of box	Fuel	Max Engine size/ Vehicle weight	
Ø IDA	C	D	F	G	T				Walker ref. no
mm	mm	mm	mm	mm	mm				
45.5	104.6	318	112.4	-	1.5	Rolled	Petrol	2.0 / 2000kg	65200
50.5	101.6	315	112.4	-	1.5	Rolled	Petrol	2.0 / 2000kg	65201
47	152.4	380	113	133	1.5	Shell	Diesel	2.0 / 2000kg	66936
50.5	101.6	310	113	133	1.5	Shell + flattening	Petrol	2.0 / 2000kg	67990

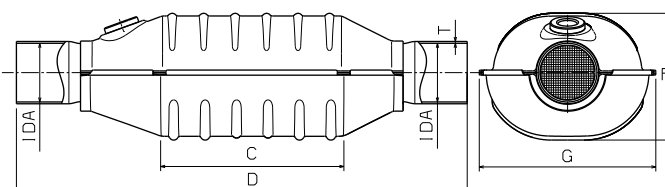
Stock code: 91

UNIVERSAL CATALYTIC CONVERTER OVAL

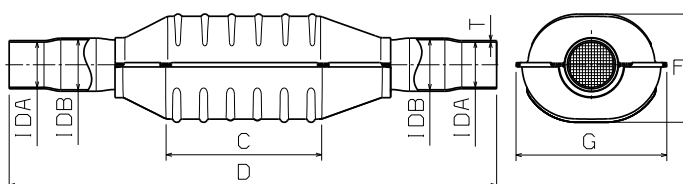
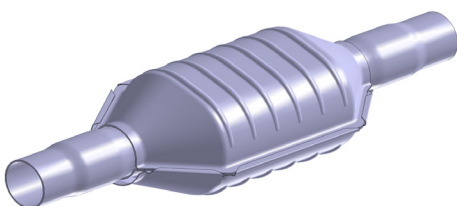
TYPE 1 OF DESIGN



TYPE 2 OF DESIGN



TYPE 3 OF DESIGN



Ø IDA	Ø ID B	Box length	Total length	Box Height	Box Width	Thick. Tube	Type of box	Heatshield	Lambda Socket	Fuel	Max Engine size/ Vehicle weight	Walker ref. no
mm	mm	mm	mm	mm	mm	mm						
50.8	-	155	337	95	157	1.5	1	only lower	without	Petrol	3.0 / 2000kg	66923
57.1	-	155	337	95	157	1.5	1	only lower	without	Petrol	3.0 / 2000kg	66924
50.8	-	155	337	105	157	1.5	1	upper & lower	Socket & plug M18	Petrol	3.0 / 2000kg	66925
47	-	155	367	103	148	1.5	2	only lower	without	Petrol	1.8 / 2000kg	66940
50.5	-	155	387	103	148	1.5	2	only lower	Socket M18	Petrol	2.0 / 2000kg	65994
50.5	-	155	387	103	148	1.5	2	only lower	without	Petrol	2.0 / 2000kg	65995
55.5	-	155	387	103	148	1.5	2	only lower	without	Petrol	2.0 / 2000kg	65996
50.5	-	155	387	103	148	1.5	2	only lower	Socket M18	Petrol	2.0 / 2000kg	65997
50.5	-	155	387	103	148	1.5	2	only lower	without	Petrol	2.0 / 2000kg	65992
55.5	-	155	387	103	148	1.5	2	only lower	without	Petrol	2.0 / 2000kg	65993
47	-	155	393.5	106.5	179	1.5	2	only lower	without	Petrol	3.0 / 2000kg	66931
45.5	50.5	155	440	103	148	1.5	3	only lower	without	Petrol	2.0 / 2000kg	65990

Stock code: 91



MINI-CONVERTER

With the new Walker Mini-Converter you can reduce your car taxes* and at the same time help to protect the environment. The new Mini-Converter is installed as an addition to the original Converter. The highly precious metal coating allows to switch from Euro 1 to Euro 2 and for some cars even to D3.

The Mini-Converter package includes:

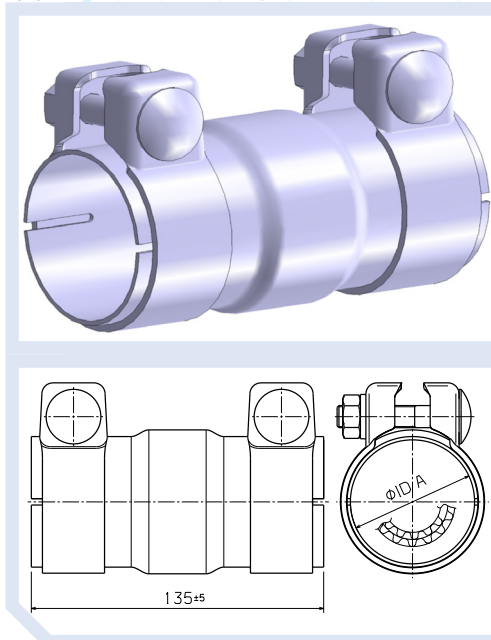
- Homologation Documents
- Mounting guidelines
- Request Form for car tax reduction

*Offer only valid in Germany

Ø ID A	Mini Converter Diesel
mm	Walker ref. no
50.5	69004
55.5	69005
60.5	69006

Ø ID A	Mini Converter Petrol
mm	Walker ref. no
42.5	69000
45.5	69001
50.5	69002
55.5	69003
60.5	69007

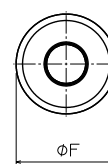
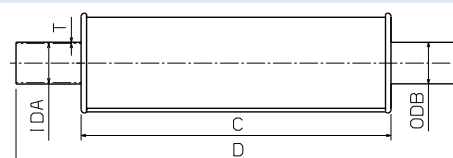
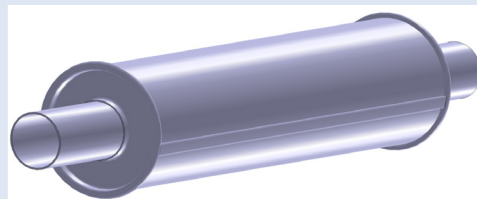
Stock code: 91



UNIVERSAL SILENCER ROUND

Inlet		Outlet		Box length	Total length	Box OD	Thickness Tube	
Ø ID A	Ø OD B	C	D	F	T			Walker ref. no
mm	mm	inch	mm	mm	mm	mm	mm	
51.3	50.8	2	380	540	120	1.5		09736
60.5	60	2 ³ / ₈	380	540	120	1.5		09738

Stock code: 51

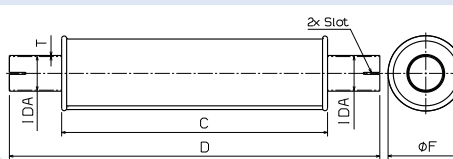


UNIVERSAL SILENCER ROUND WITH SLOTS

Inlet	Box length	Total length	Box OD	Thickness Tube	
Ø ID A	C	D	F	T	Walker ref. no
mm	mm	mm	mm	mm	
51.5	400	550	76	1.5	32105
51.5	400	560	102	1.5	32106
64	600	760	102	1.5	32116
64	250	380	123	1.5	32114
64	420	550	123	1.5	32115
76.7	250	380	123	1.5	32124
76.7	620	750	123	1.5	32125

Stock code: 61

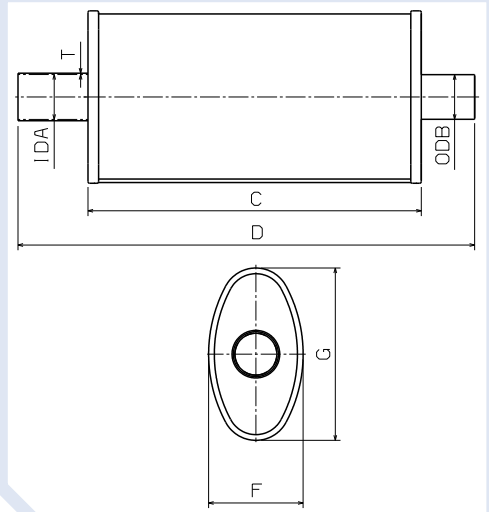
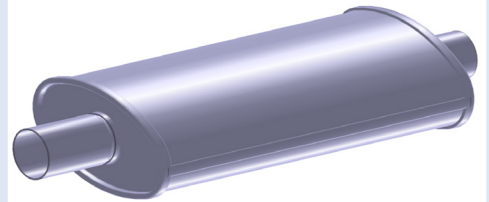
* Silencers without EU homologation.



UNIVERSAL SILENCER OVAL

Inlet	Outlet	Box length	Total length	Box OD	Box Width	Thickness Tube		
Ø ID A	Ø OD B	C	D	F	G	T	Walker ref. no	
mm	mm	inch	mm	mm	mm	mm		
51.3	50.8	2	380	520	108	197	1.5	09737
60.5	60	2 ³ / ₈	380	505	108	197	1.5	09739

Stock code: 51



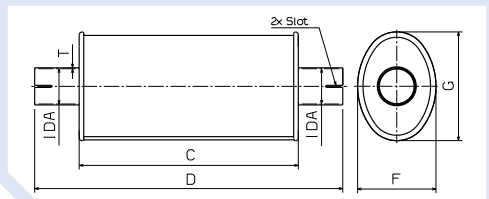
UNIVERSAL SILENCER OVAL WITH SLOTS

Inlet	Box length	Total length	Box Height	Box Width	Thickness Tube	
Ø ID A	C	D	F	G	T	Walker ref. no
mm	mm	mm	mm	mm	mm	
51.5	320	450	102	147	1.5	32107
51.5	420	560	102	147	1.5	32108
64	320	450	118	178	1.5	32118
64	420	550	118	178	1.5	32117
64	500	625	130	200	1.5	32120
76.7	250	380	130	200	1.5	32127
76.7	500	650	130	200	1.5	32126 **

Stock code: 61

* Silencers without EU homologation.

** Center of outlet is offset from center of box about 38mm.



HIGH PERFORMANCE TURBO MUFFLERS

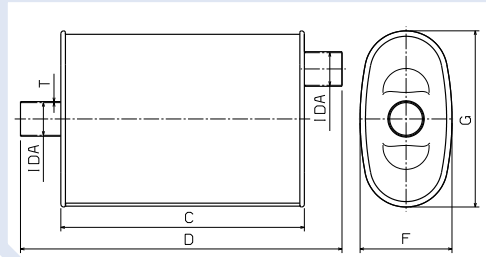
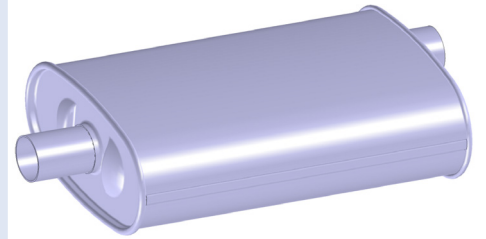
- Patented Flow Directors Channel Exhaust Flow for Maximum Power.
- 100% Aluminised Materials for Sharp Appearance and Long Life.
- Fiberglass Matting Delivers a Mellow, True Performance Sound.
- Reduces Backpressure for Increased Horsepower and Fuel Economy.
- Spun Locked Heads for Positive Seal to Resist Damage from Backfiring.
- Internal Drainage System Reduces Corrosion.
- Large Diameter Flow Tubes for High Volume Gas-flow Provide Low Backpressure.

*Silencers without EU homologation.

INLET CENTRAL

Inlet/Outlet		Box length	Total length	Box Height	Box Width	Thickness Tube	
Ø ID A		C	D	F	G	T	
mm	inch	mm	mm	mm	mm	mm	Walker ref. no
50.8	2	355	470	117	265	1.5	14881
57.1	2 ¼	355	470	117	265	1.5	14882
63.5	2 ½	355	470	117	265	1.5	14884

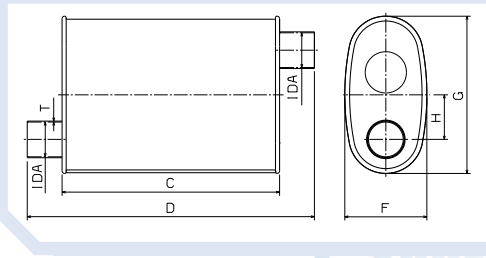
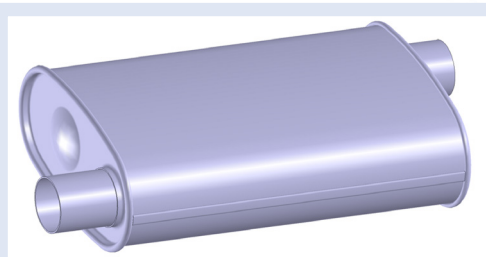
Stock code: 51



INLET SIDE

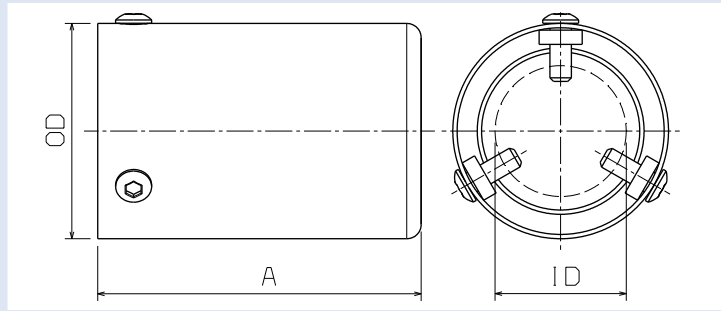
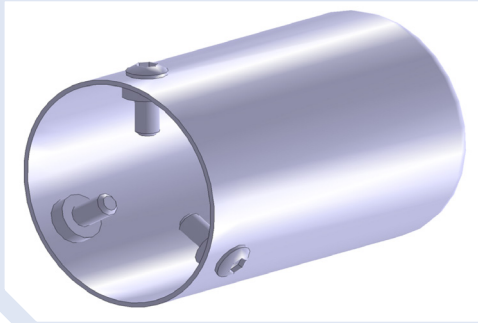
Inlet/Outlet		Box length	Total length	Box Height	Box Width	Distance Inlet	Thickness Tube	
Ø ID A		C	D	F	G	H	T	
mm	inch	mm	mm	mm	mm	mm	mm	Walker ref. no
57.1	2 ¼	355	470	265	117	75	1.5	14883
63.5	2 ½	355	470	265	117	75	1.5	14885

Stock code: 51

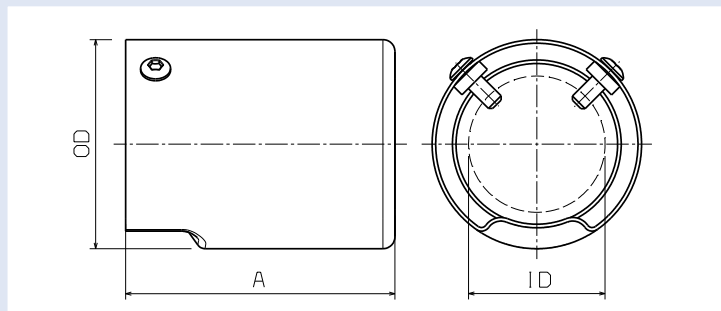
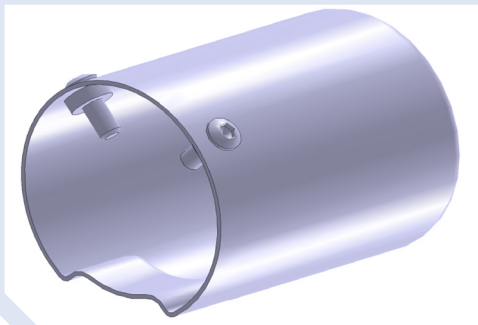


UNIVERSAL STAINLESS STEEL TAILPIPE ROUND

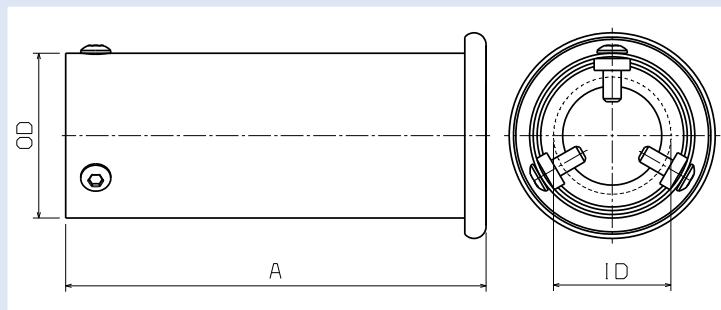
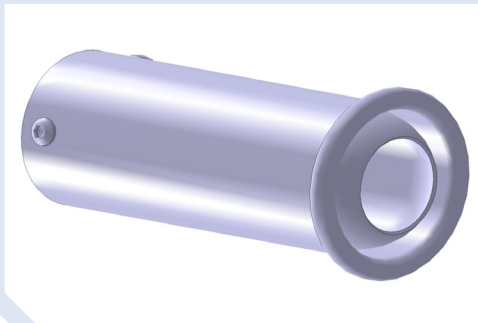
TYPE 1 WITH THREE BOLTS



TYPE 2 WITH TWO BOLTS AND FLATTENING



TYPE 3 WITH THREE BOLTS AND ADDITIONAL TUBE INSIDE



ID RANGE	OD	A	Thickness	Type	For model	Walker ref. no
mm	mm	mm	mm			
35 - 48	60	90	1.2	1	Suzuki/GM	10666
45 - 65	76	70	1.2	1	BMW/Mini	10682
42 - 50	70	90	1.2	2	Daihatsu/Toyota/Honda/Hyundai/MG	10664
35 - 40	55	140	1.2	3	Honda/Rover	07070

Stock code: 71

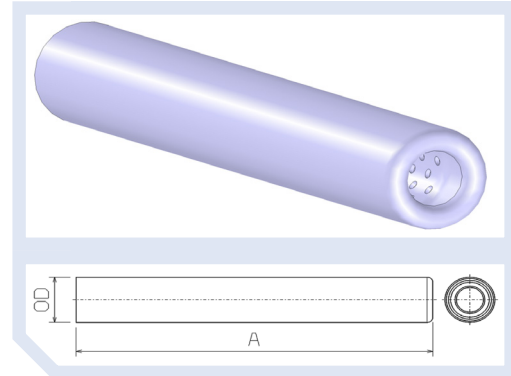


VW STAINLESS STEEL TAILPIPE ROUND WITH CHROMED EXTERNAL SURFACE

Outer Diameter
Diamètre Extérieur
Aussendurchmesser
Buitendiameter

Ø OD	A	Thickness	For model	Walker ref. no
mm	mm	mm		
35	250	outside 1.0 inside 1.5	VOLKSWAGEN 1302/1303/ Beetle/Beetle 1302/Beetle 1303/Käefer/ Kaver	04725

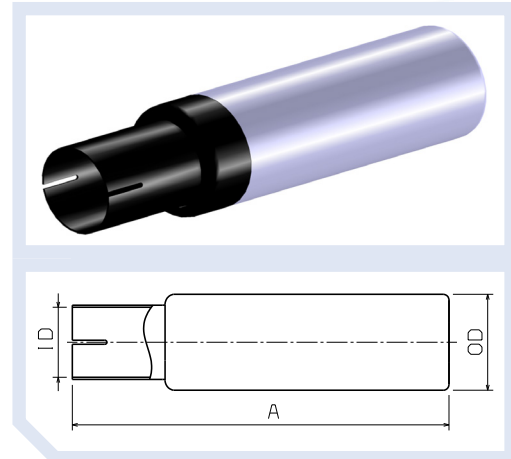
Stock code: 71



UNIVERSAL STAINLESS STEEL TAILPIPE

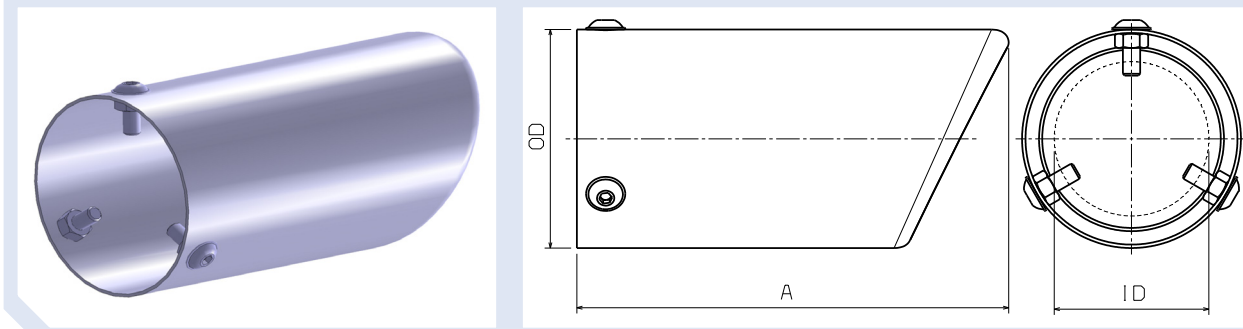
Ø ID	Ø OD	A	Thickness	Number of slots	Walker ref. no
mm	mm	inch	mm		
51.3	70	275	1.2	2	32081
64	76	275	1.2	4	32089

Stock code: 61

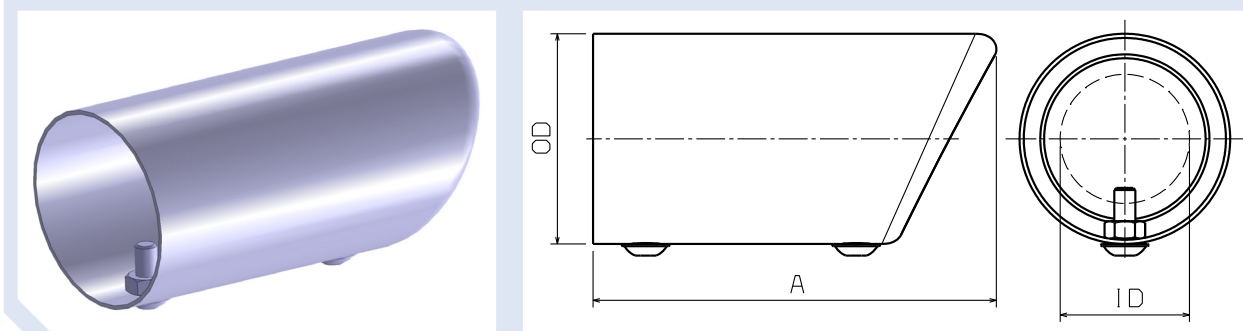


UNIVERSAL STAINLESS STEEL TAILPIPE ROUND WITH ANGLE

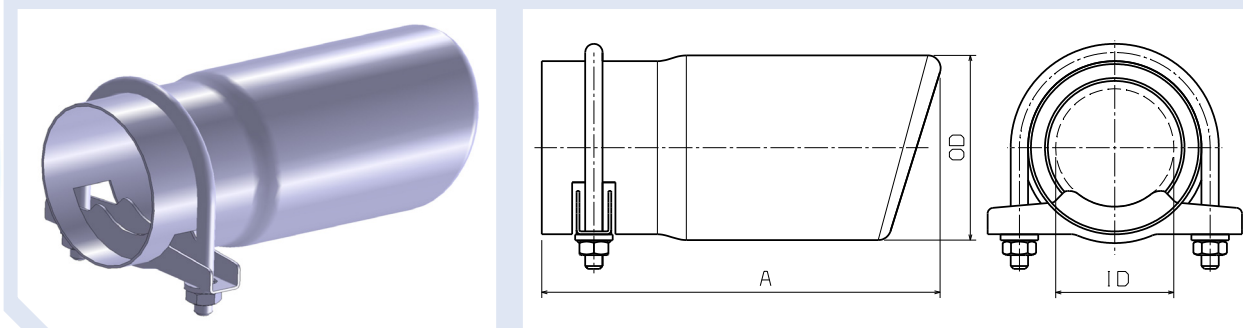
TYPE 1 WITH THREE BOLTS



TYPE 2 WITH TWO BOLTS



TYPE 3 WITH CLAMP



ID RANGE	OD	A	Thickness	Type	For model	Walker ref. no
mm	mm	mm	mm			
45 - 65	76	150	1.2	1	Volvo/Saab	10671
45 - 50	60	115	1.2	2	VW/Seat/Skoda/Audi/SAAB	10681
42 - 57	64	135	1.2	3	Toyota	10426

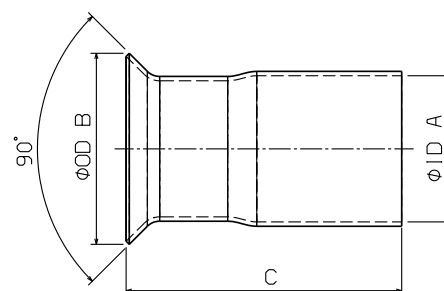
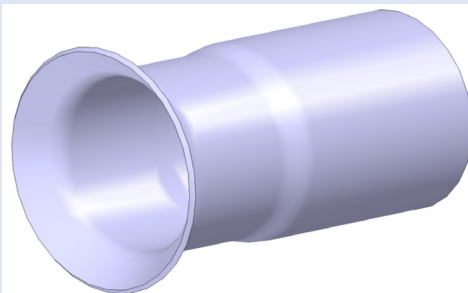
Stock code: 71

UNIVERSAL REPAIR COLLARS

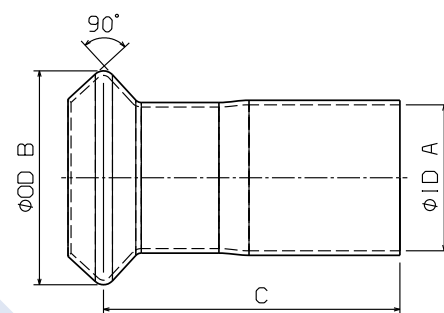
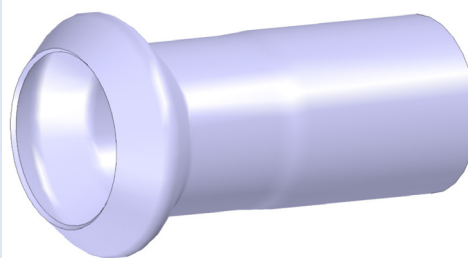
Inside Diameter Diamètre intérieur Innendurchmesser Binnendiameter	Outer Diameter Diamètre Extérieur Aussendurchmesser Buitendiameter	Length		
Ø ID A	Ø OD B	C		
mm	mm	mm	Type of collar	Walker ref. no
48.5	68	80	Single	07621
50.5	66	95	Single	07187
50.5	66	220	Single	07186
50.5	70	80	Single	07624
54.5	70	120	Single	07620
60.5	78	120	Single	07622
48.5	71	100	Double	07623
54.5	73	100	Double	07631

Stock code: 61

SINGLE COLLAR



DOUBLE COLLAR



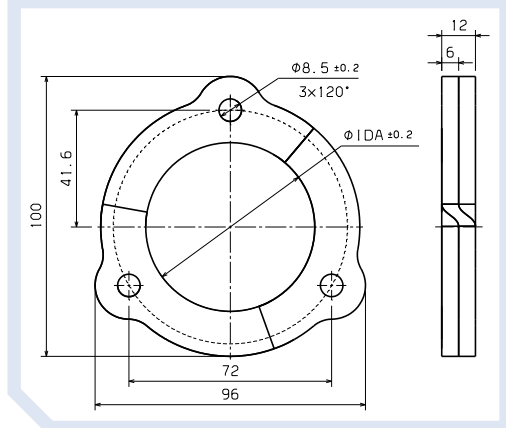
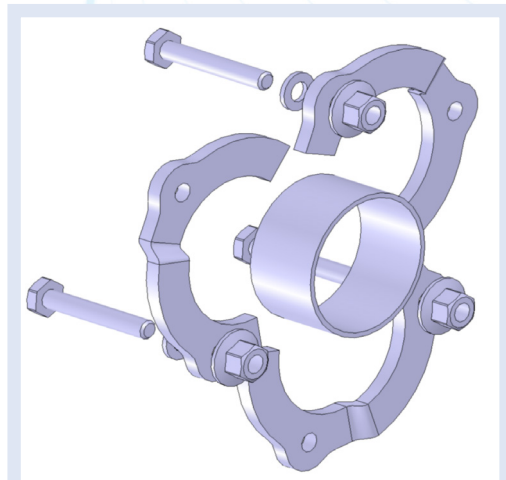
ASSORTMENT BOX

	Walker ref. no
All universal Repair Collars + Clamps (ID66; ID69; ID70)	08866

REPAIR FLANGE

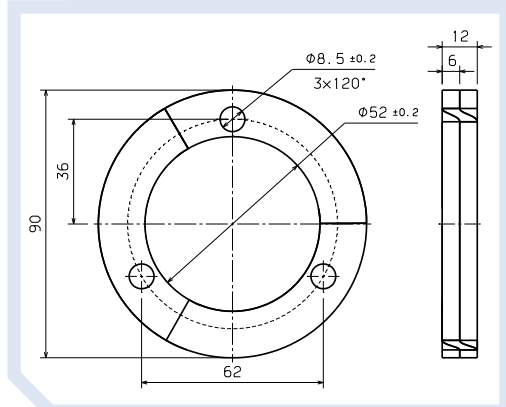
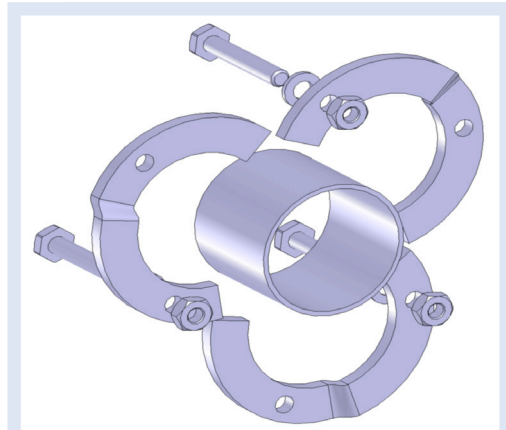
Description	Package contains	Ø ID A	
		mm	Walker ref. no
Volvo 240; 740; 940 Used in CAT Converter 19185; 19186	3x Bolt M8 3x Nut M8 3x Gasket M8	58	80310
Volvo 740; 940 Used in CAT Converter 20079; 20419	3x Bolt M8 3x Nut M8 3x Gasket M8	60	80315

Stock code: 26



Description	Package contains	Walker ref. no
SAAB 900 Used in CAT Converter	3x Bolt M8 3x Nut M8 3x Gasket M8	80311

Stock code: 26

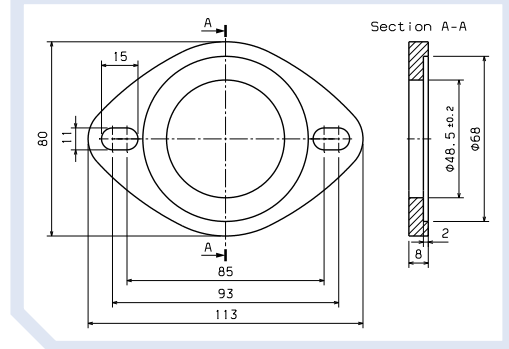
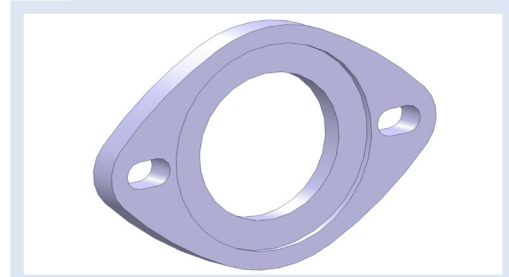


REPAIR FLANGE

ST 37-2 (S235JR / 1.0037)

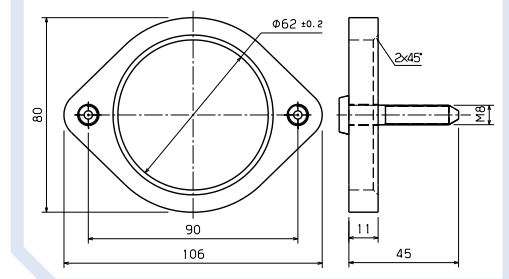
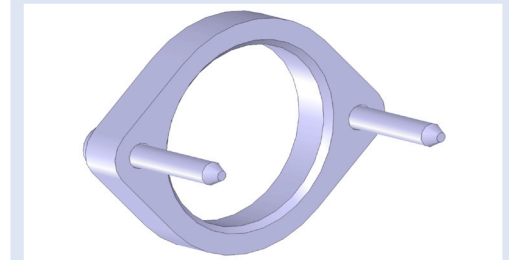
Description	Walker ref. no
TOYOTA Carina E 1.6 Used in CAT Converter 20084	80391

Stock code: 26



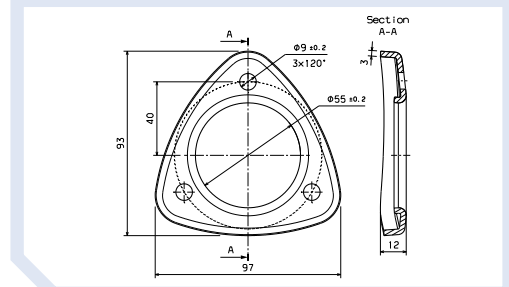
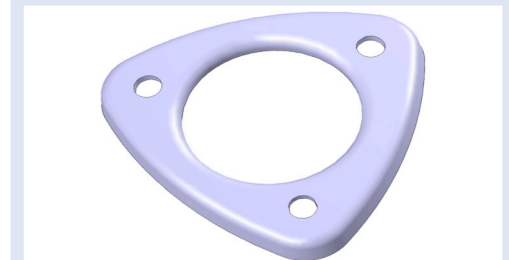
Description	Walker ref. no
SAAB 9000 Used in CAT Converter 18362	80489

Stock code: 26



Description	Walker ref. no
Volvo 240; 740; 940 Used in CAT Converter 19186	82509

Stock code: 26

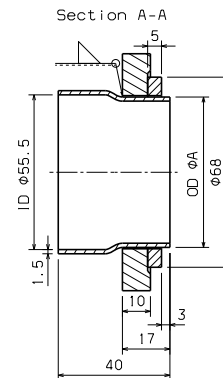
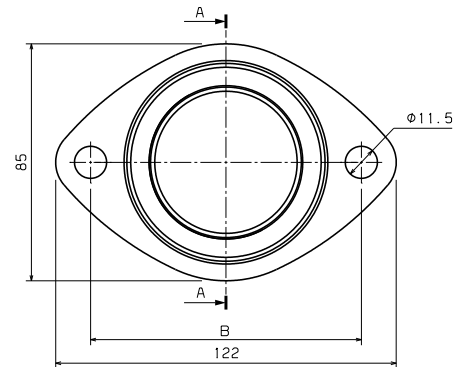
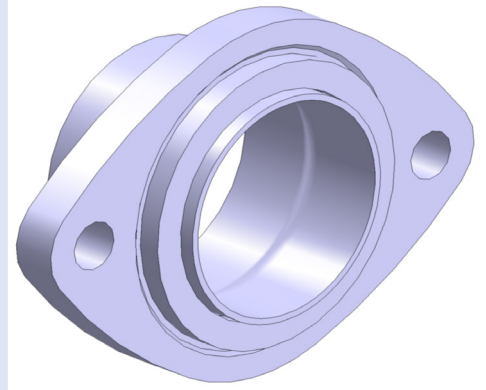


REPAIR FLANGE

Flange: ST 37-2 (S235JR / 1.0037)
 Pipe: BHT (1.0309 + AS120)

Description	Package Contains	Ø OD	HOLE	Walker ref. no
		A	SPACING B	
TOYOTA Avensis/Carina E 1.8/2.0 Used in CAT Converter 20524	Pipe welded to Flange + Gasket	54	97	09965
TOYOTA Carina E 1.6 Used in CAT Converter 20084	Pipe welded to Flange + Gasket	48	93	09967

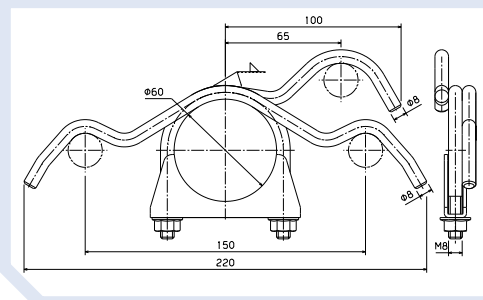
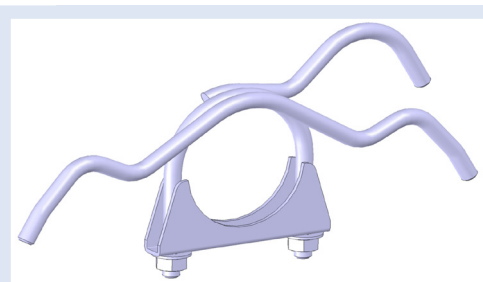
Stock code: 71



REPAIR HANGER

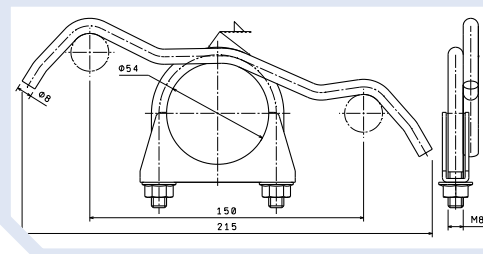
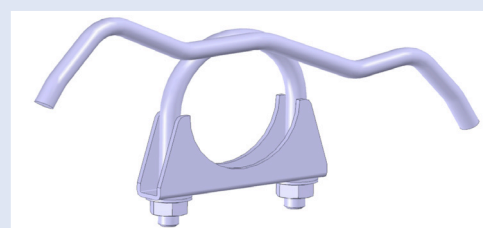
Description	Walker ref. no
Volvo 850; V70 I; S70; Used in Rear Silencer	80301

Stock code: 23



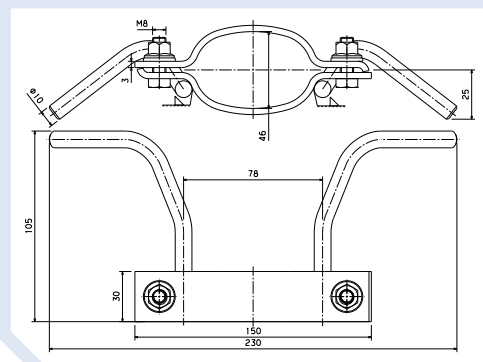
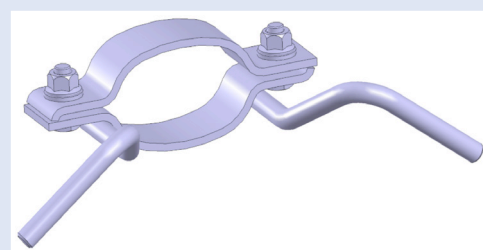
Description	Walker ref. no
Volvo 850 Combi; V70 I; S70; Used in Rear Silencer	80313

Stock code: 23



Description	Walker ref. no
Volvo V70 II; S60; S80 Used in Intermediate Silencer	80352

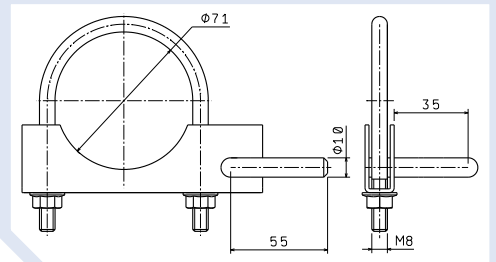
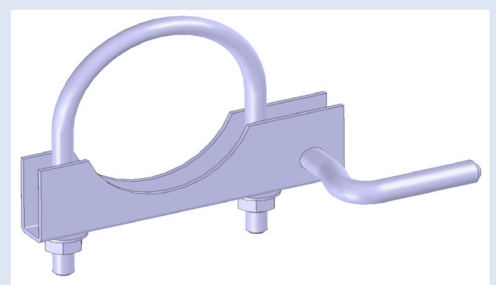
Stock code: 23



REPAIR HANGER

Description	Walker ref. no
Volvo V70 II; S60; S80 Used in Rear Silencer	87596

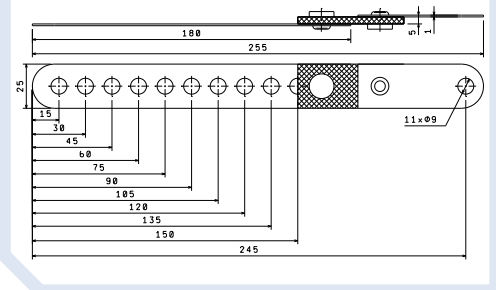
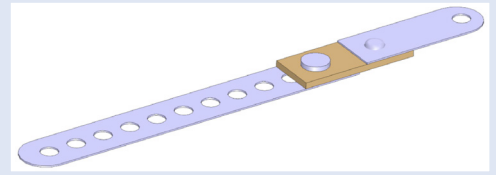
Stock code: 23



UNIVERSAL HANGER

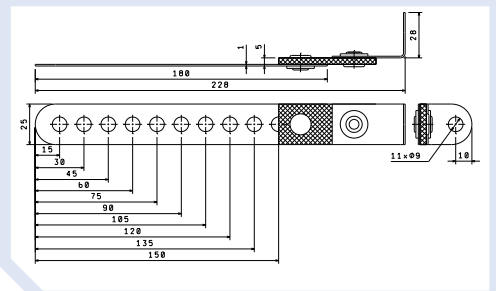
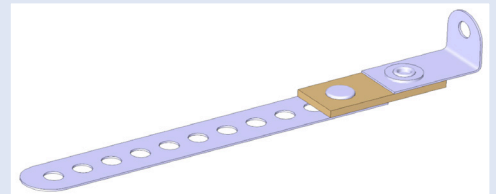
Description	Walker ref. no
Universal Hanger	81557

Stock code: 23



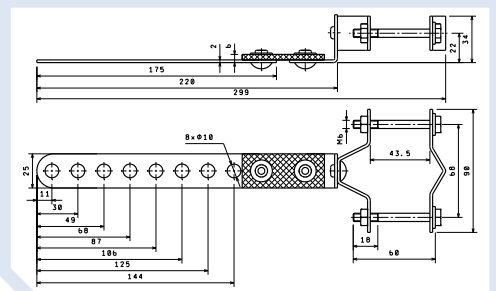
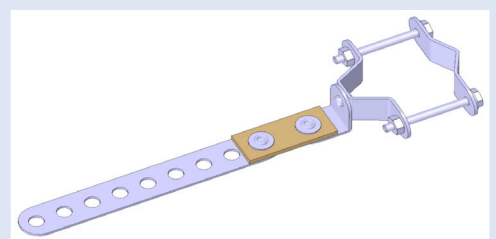
Description	Walker ref. no
Universal Hanger	81558

Stock code: 23



Description	Walker ref. no
Universal Hanger	81569

Stock code: 23

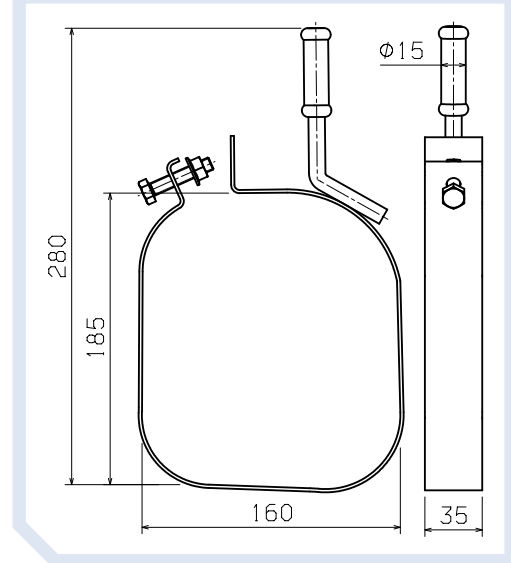
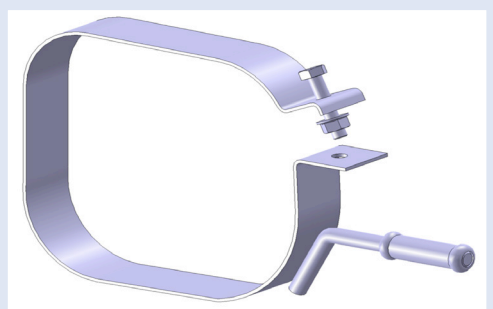


PSA BODY CLAMPS

PSA Clamp Walker ref. no	Fits for OE# Silencer	Model	Silencer Walker ref. no
80594	1726-NW, 1730-C5, 1726-ZH, 1730-45	Citroën C3 1.6l Peugeot 1007 1.6	22309

Stock code: 23

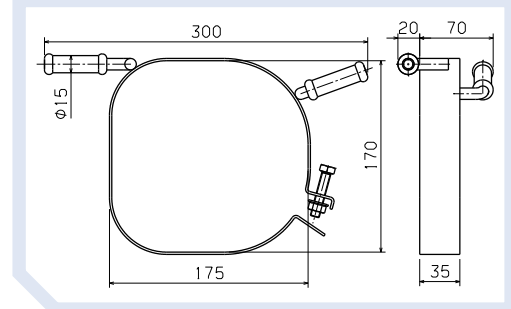
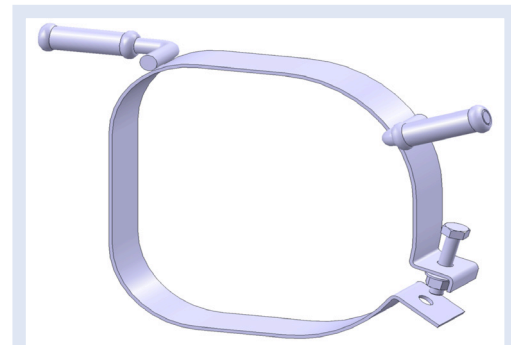
- *Body Clamp fits only for original PSA Silencer.
- *WALKER provides Body Clamp as welding suspension with Silencer. Silencer WALKER no. is listed for reference only.



PSA Clamp Walker ref. no	Fits for OE# Silencer	Model	Silencer Walker ref. no
80595	1726-VJ	CITROËN Xsara Picasso 1.6 HDi	22867
80595	1726-TY, 1726-EN	CITROËN Xsara Picasso 1.6i	22844
80595	1726-TX, 1726EP	CITROËN Xsara Picasso 2.0 HDi	72178

Stock code: 23

- *Body Clamp fits only for original PSA Silencer.
- *WALKER provides Body Clamp as welding suspension with Silencer. Silencer WALKER no. is listed for reference only.



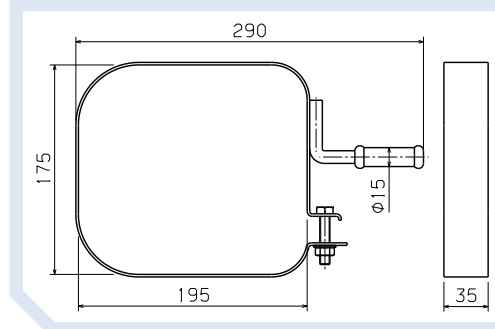
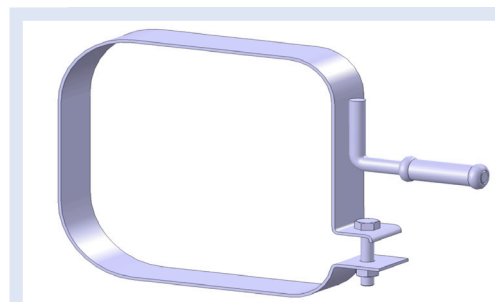
PSA BODY CLAMPS

PSA Clamp Walker ref. no	Fits for OE# Silencer	Model	Silencer Walker ref. no
80596	1726-WT, 1726-KL, 1726-KX, 1726-RJ, 1726-WA, 1726-WS, 1726-WZ, 1730-26, 1730-50, 1730-H8	CITROËN C4 1.6 HDi / 2.0 HDi PEUGEOT 307 1.6 HDi / 2.0 HDi	71211
80596	1726-KW, 1726-LL, 1726-LN, 1726-RH, 1726-SN, 1726-TJ, 1726-WY, 1730-51, 1730-C1	PEUGEOT 307 2.0i/1.6 HDi/2.0 HDi	22622

Stock code: 23

*Body Clamp fits only for original PSA Silencer.

*WALKER provides Body Clamp as welding suspension with Silencer. Silencer WALKER no. is listed for reference only.

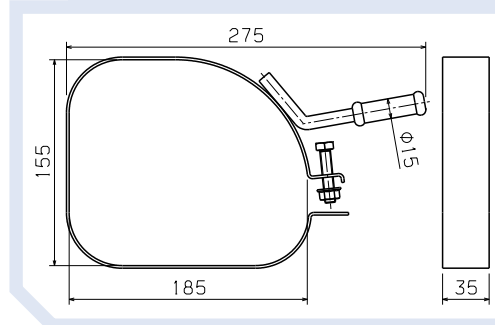
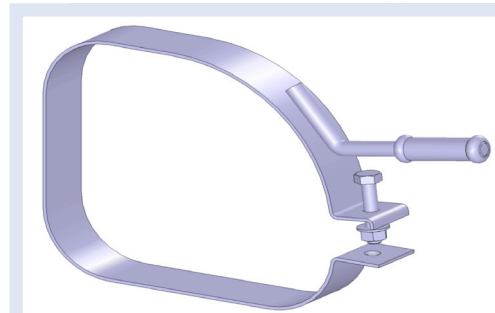


PSA Clamp Walker ref. no	Fits for OE# Silencer	Model	Silencer Walker ref. no
80597	1726-NQ, 1726-XQ, 1726-ZP, 1730-J8	CITROËN C2, C3 1.4 HDi PEUGEOT 1007 1.4 HDi	22954

Stock code: 23

*Body Clamp fits only for original PSA Silencer.

*WALKER provides Body Clamp as welding suspension with Silencer. Silencer WALKER no. is listed for reference only.

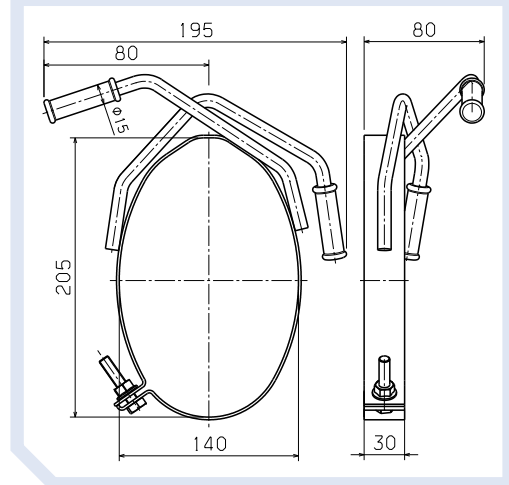


PSA BODY CLAMPS

PSA Clamp Walker ref. no	Fits for OE# Silencer	Model	Silencer Walker ref. no
80598	1726-AG, 1726-AH, 1726-N5, 1726-N6, 1726-N7, 1726-N8, 1726-QT, 1726-VC, 1726-W7, 1726-W8, 1726-KH, 1726-KY, 1730-N4, 1730P1, 1730-Q1, 1730-Q3	CITROËN Berlingo 1.1i/ 1.4i/ 1.6i/ 1.8i/ 1.9D PEUGEOT Partner 1.1i/ 1.4i/ 1.6i/ 1.8i/ 1.9D	21993
80598	1726-GN, 1726-KY, 1726-KZ	CITROËN Berlingo 2.0 HDi PEUGEOT Partner 2.0 HDi	22293

Stock code: 23

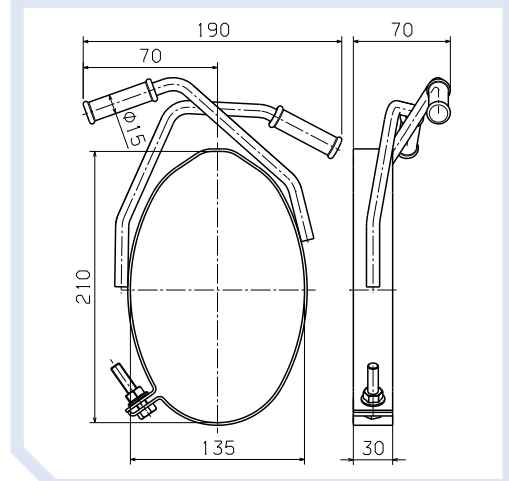
- *Body Clamp fits only for original PSA Silencer.
- *WALKER provides Body Clamp as welding suspension with Silencer. Silencer WALKER no. is listed for reference only.



PSA Clamp Walker ref. no	Fits for OE# Silencer	Model	Silencer Walker ref. no
80605	1726-VF, 1726-KG, 1726-QV, 1726VG, 1726-YC, 1726-YE, 1730-11, 1730-12, 1730-A4, 1730-A5, 1730-Q8	CITROËN Berlingo 1.6i/ 1.6HDi/ 2.0HDi PEUGEOT Partner 1.6i/ 1.6HDi/ 2.0HDi	23289

Stock code: 23

- *Body Clamp fits only for original PSA Silencer.
- *WALKER provides Body Clamp as welding suspension with Silencer. Silencer WALKER no. is listed for reference only.

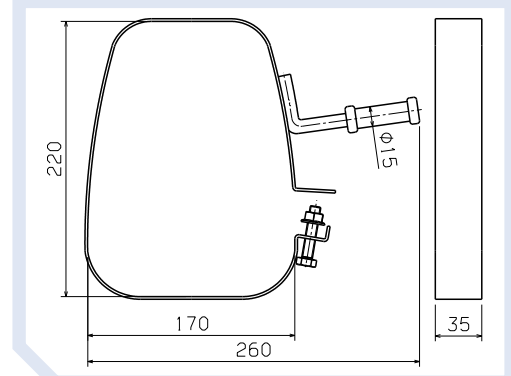
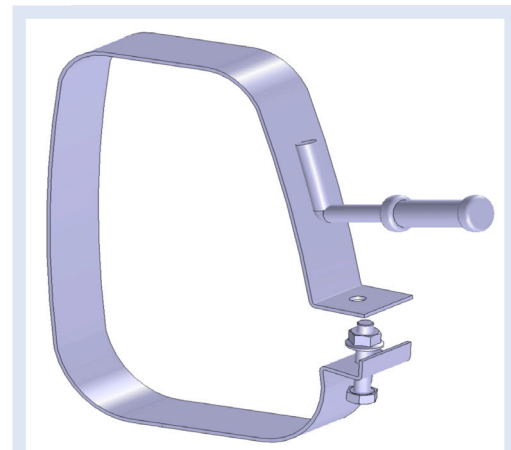


PSA BODY CLAMPS

PSA Clamp Walker ref. no	Fits for OE# Silencer	Model	Silencer Walker ref. no
80606	1730-78, 1730-77	Peugeot 207 1.4l	23228
80606	1730-83	Peugeot 207 1.4l	23224
80606	1730-85	Peugeot 207 1.6l	23227
80606	1730-79	Peugeot 207 1.6l	23226
80606	1730-82	Peugeot 207 1.6Hdi	23223
80606	1730-AE, 1730-AA, 1730-94	Peugeot 207 1.6HDi	23390
80606	1730-84	Peugeot 207 1.6HDi	23225
80606	1730-93, 1730-80, 1730-AC	Peugeot 207 1.6HDi	23391

Stock code: 23

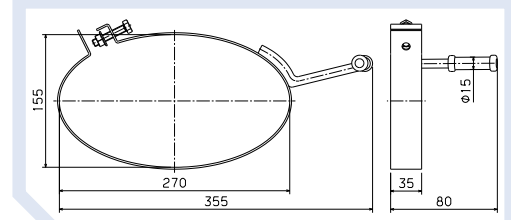
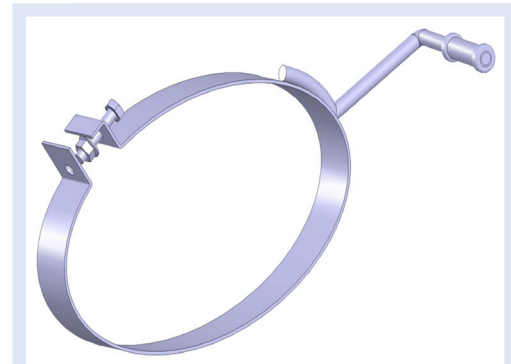
- *Body Clamp fits only for original PSA Silencer.
- *WALKER provides Body Clamp as welding suspension with Silencer. Silencer WALKER no. is listed for reference only.



PSA Clamp Walker ref. no	Fits for OE# Silencer	Model	Silencer Walker ref. no
80610	1726-VX, 1726-VN, 1726-PX, 1726-PY, 1726-VT	PEUGEOT 206 SW 1.6 / 2.0HDi	22800
80610	1726-VY, 1726-NZ	PEUGEOT 206 SW 1.1i / 1.4i / 1.6i	22734

Stock code: 23

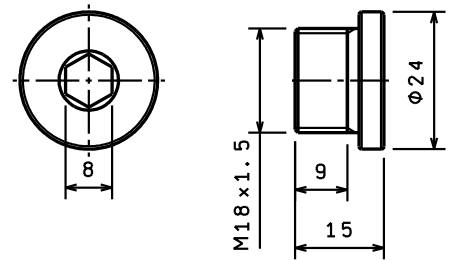
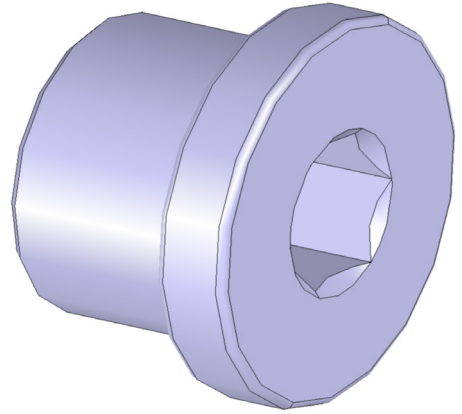
- *Body Clamp fits only for original PSA Silencer.
- *WALKER provides Body Clamp as welding suspension with Silencer. Silencer WALKER no. is listed for reference only.



LAMBDA SENSOR PLUG

Dimensions	Walker ref. no
M18 x 1.5mm DIN 908	83294

Stock code: 26



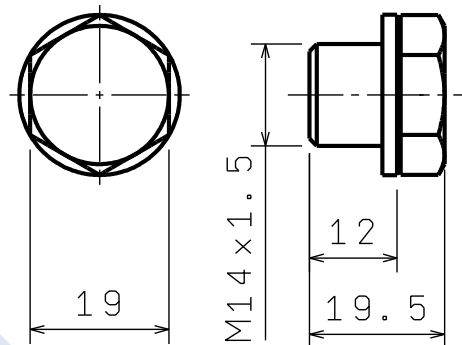
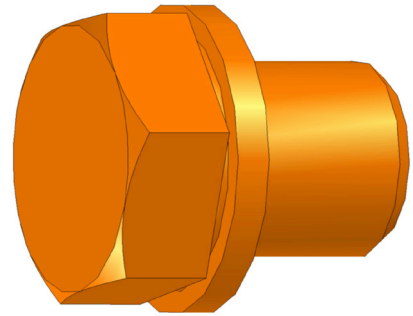
MAX TORQUE

40-55Nm

LAMBDA SENSOR PLUG

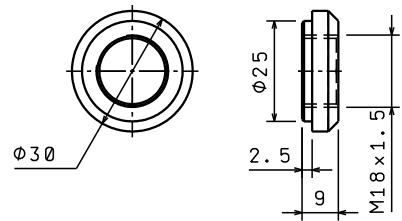
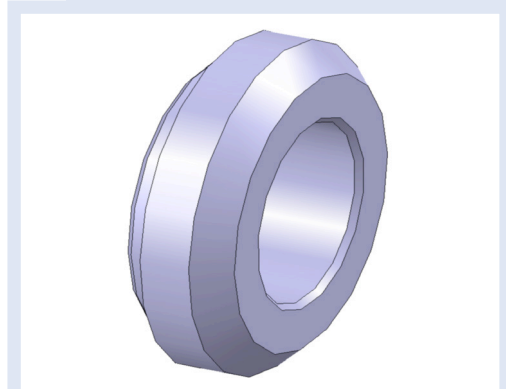
Dimensions	Walker ref. no
M14 x 1.5mm	80877

Stock code: 25

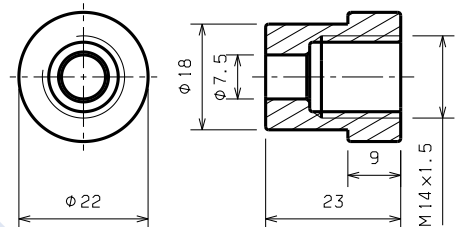
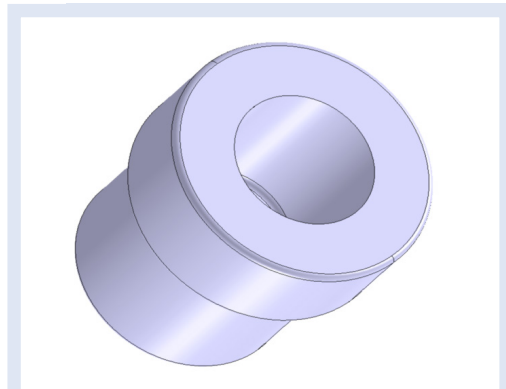


LAMBDA SENSOR NIPPLE

Dimensions	Walker ref. no
M18 x 1.5mm	80433
Stock code: 26	



Dimensions	Walker ref. no
M14 x 1.5mm	80665
Stock code: 26	



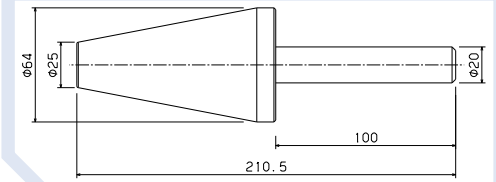
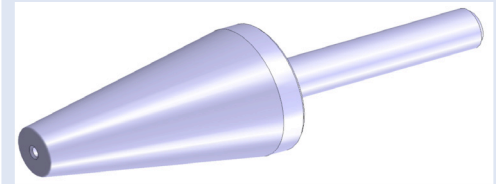
PIPE-END SHAPER

Description	Walker ref. no
Pipe-end Shaper	82076

Stock code: 28

Conical and cylindrical expansion cones can be used to repair exhaust, tubing or pipe work ends that may have been damaged from external impact during transport.

The expansion tooling can be conical or cylindrical in shape.



PIPE CUTTER

Description	Walker ref. no
Pipe cutter Ø19 -76mm	07081

Stock code: 28

The pipe cutter is a very easy to use tool, that has been designed to cut pipe sections ranging from 19 mm to 76mm.

The tube is cut by surrounding the tube with the metallic chain of the pipe cutter and making their sharp blades press against the surface of the tube in a circular motion.

One of its main advantages of the tool is that it don't produces sparks during the cutting process, being totally safe in environments where there may be flammable fuel.



PIPE EXPANDER

Description	Walker ref. no
Pipe expander Ø38 -64mm	07099

Stock code: 28

Pipe expanders are tools designed to reshape dented pipes to its original cylindrical shape. The working principle is very simple, once the tool is placed inside the pipe where the damage is, we can expand its shape until the surface of the pipe recovers its original cylindrical shape

Impacts are very common and generally occur during the different steps of the transportation process of the part from the manufacturer's warehouse to our workshop.

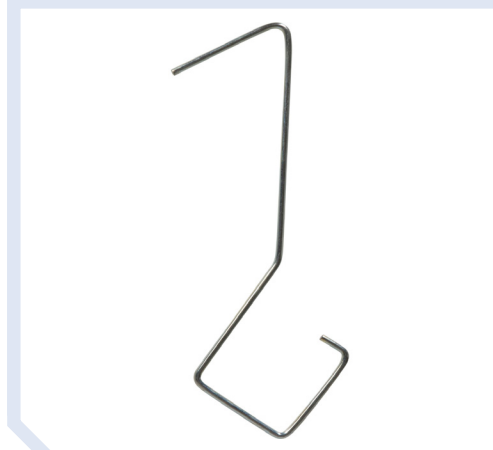


STORAGE HOOK

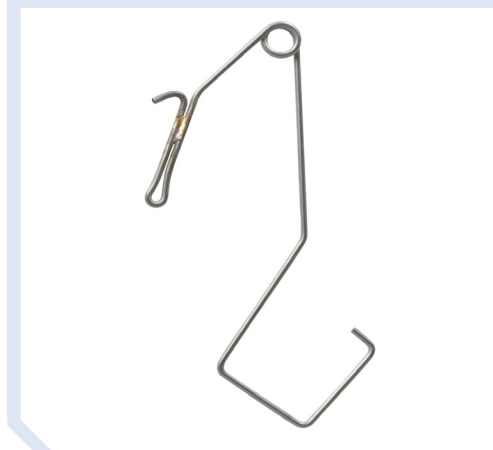
Type	Walker ref. no
1	07079
2	18099

Stock code: 28

TYPE 1 WITHOUT LOOP



TYPE 2 WITH LOOP

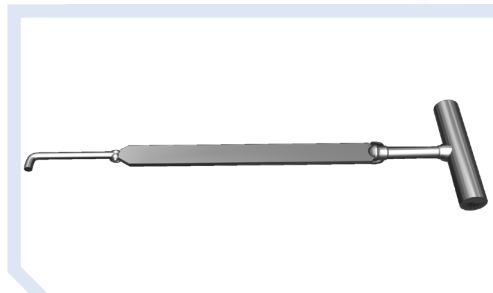


STORAGE HOOK REMOVER

Description	Walker ref. no
Storage Hook Remover	14920

Stock code: 28

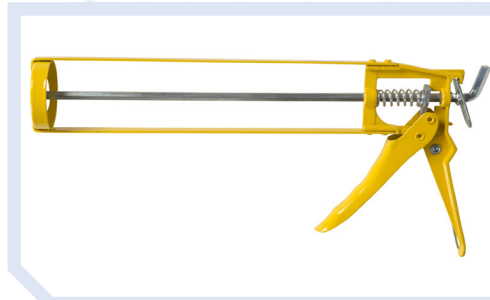
For removal of storage hooks from the exhaust.



CARTRIDGE GUN

Description	Walker ref. no
Cartridge gun	13635

Stock code: 28



PUTTY PASTE & LUBRICATION FLUID

Product	Exhaust Jointing Paste			Exhaust Sealing Putty	Lubricating Fluid
	Tube	Cartridge		Tube	Aerosol (Ozone friendly)
Contents pack qty.	140g/12	250g/12	500g/12	250g/12	400ml/1
Walker ref. no	13633	13634	17661	17662	13637

Stock code: 28

PASTE

- Easy working
- Resistant to 700°C
- Leak proof seal

LUBRICATING

- Penetrates fast - frees seized and rusted parts
- Damp starts engines
- Lasting lubrication
- Protects against rust

Use **Walker Exhaust Jointing Paste** for assembly of exhaust parts **only after** catalytic converter or DPF. Jointing paste should always be applied only to areas of possible leakage in connections between exhaust parts, - like sleeves and flanges. Do never apply excessive amount of paste to avoid lumps in exhaust system.



SAFETY WARNINGS

Always wear gloves. (Rubber or neoprene gloves are not recommended for this type of job).

Never use sealing paste before the catalytic converter unit (to fix the exhaust manifold or catalytic converter). Exhaust paste contains silicone which, if placed before the catalytic converter, will damage the monolith and destroy the catalytic converter function. Always use original gaskets to seal these units. Sealing paste irritates the eyes. Protect your eyes with glasses (if the paste comes into contact with the eyes, rinse them immediately with water and seek medical advice, if necessary). Keep out of the reach of children.

REGENERATION ACTIVATOR & PREVENTION DOSE

Product	Regeneration activator	Prevention dose
Contents	1,5L	250ml
Walker ref. no	80611	80613

Stock code: 85

REGENERATION ACTIVATOR

Solution

- Regeneration activator for Diesel engine is a high concentration additive derived from a partnership between Tenneco and engine specialist Spheretech
- Its formula is based on the reactants which will eliminate by oxidation, soot and particles which originally block turbochargers, DPF & catalytic converters.

Advantages

- Essential for a annual curative injectors & pumps maintenance.
- Restores the injection cycles (main injections, post injections), releases the flow of exhaust gas and restores the efficiency of DPF regeneration.
- Prevents & descaled by oxidation the turbo and its variable geometry without disassembly.
- Reduces the smokes and facilitates the MOT inspection.
- Engine gets softer, quieter and more fuel-efficient : better performance.
- An economic response to costly replacements.

PREVENTION DOSE

Solution

- Helps DPF to regenerate.
- Prevents carbon deposits and particulates into the DPF unit.
- Highly recommended for urban driving cycle and short driving cycle.
- Disintegrates deposits during combustion.
- Exhaust valves, piston heads and combustion chambers are descaled, which allows the engine to work under optimal level of performance.
- Provides very high protection of diesel injection systems.
- Cleans and lubricates the low & high pressure pumps & injectors.
- Neutralizes condensation and prevents deposit in the fuel tank.
- Increases cetane and restores the original injections.

Advantages

- Reduces fuel consumption.
- Stabilizes idling.
- Increases engine life.
- Reduces exhaust smoke.
- Reduces pollution.
- Improves acceleration.



FUEL BORNE CATALYST FOR DPF

How to identify which Fuel Borne Catalyst is needed and choose the correct reference

Brand	Registration date	DAM no.	Walker part. no			
			Eolys		Walker Alternative	
						
			Eolys DPX42		Walker Generation 1	
			1 liter	4,5 liters	1 liter	4,5 liters
CITROEN	- 04/11/2002	- 9492	80600	80500	80614	80615
FIAT	- 04/11/2002		80600	80500	80614	80615
PEUGEOT	- 04/11/2002	- 9492	80600	80500	80614	80615
						
			Eolys 176		Walker Generation 2	
			1 liter	3 liters	1 liter	3 liters
CITROEN	05/11/2002 - 28/02/2010	9493 - 12165	80601	80501	80617	80618
FIAT	05/11/2002 - 28/02/2010		80601	80501	80617	80618
FORD	05/11/2002 - 28/02/2010		80601	80501	80617	80618
MAZDA	05/11/2002 - 28/02/2010		80601	80501	80617	80618
MINI	05/11/2002 - 28/02/2010		80601	80501	80617	80618
PEUGEOT	05/11/2002 - 28/02/2010	9493 - 12165	80601	80501	80617	80618
VOLVO	05/11/2002 - 28/02/2010		80601	80501	80617	80618
						
			Power Flex		Walker Generation 3	
			1 liter	3 liters	1 liter	3 liters
CITROEN	01/03/2010 -	12166 -	80603	80602	80619	80620
FIAT	01/03/2010 -		80603	80602	80619	80620
FORD	01/03/2010 -		80603	80602	80619	80620
MAZDA	01/03/2010 -		80603	80602	80619	80620
MINI	01/03/2010 -		80603	80602	80619	80620
PEUGOT	01/03/2010 -	12166 -	80603	80602	80619	80620
VOLVO	01/03/2010 -		80603	80602	80619	80620

Stock code: 85

FUEL BORNE CATALYST FOR DPF

Fuel Borne Catalyst additive (FBC) is a compound that is mixed with the fuel in the fuel tank of vehicles equipped with a particulate filter, it enables the elimination of more than 98 % of the solid particle matter emitted by this type of engines to the atmosphere, including ultra-fines which are considered to have the most adverse health effects.

The role of the additive is:

- To lower the combustion temperature of the particles (600°C to 450°C).
- To be burned at the combustion chamber together with the fuel, to directly impregnate the particles.
- To propagate combustion (oxidation) of the solid particles in the DPF, improving its effectivity and reducing the time and the energy needed to perform the regeneration process.

Scan the QR-code and
watch the video about
Eolys refilling





Tenneco Customer services

Customer Service UK/Ireland

T +44 (0) 121 609 3000
F +44 (0) 121 609 3037
F +44 (0) 121 609 3038

Customer Service France

T +33 (0) 9 70 80 96 85
F +33 (0) 2 43 66 64 59
F +33 (0) 2 43 66 64 58

Customer Service Spain/Portugal

T +34 91 627 75 55
F +34 91 671 08 00

Customer Service Denmark

T +45 63 41 33 00
F +45 63 41 33 20

Customer Service Balkans (Czech Republic, Croatia, Slovakia)

T +33 (0) 3 82 59 60 35
T +33 (0) 3 82 59 60 25

Customer Service Italy/Greece

T +32 (0) 11 70 35 46
F +32 (0) 11 70 31 10

Customer Service Poland/Eastern Europe

T +48 32 42 94 290
F +45 63 41 33 20

Customer Service Sweden

T +46 3727 0500
F +46 3727 0325

Customer Service Germany/D-A-CH

T +49 6323 472913
F +49 6323 472921

Tenneco Aftermarket offices

Tenneco Europe - Tenneco Benelux

Avenue du Bourgetlaan 50
1130 Brussels, Belgium

Tenneco CEE South

Prekratova 39
10020 Zagreb, Croatia

Tenneco Czech Republic

Rychnovska 383
463 42 Hodkovice nad Mohelkou
Czech Republic

Tenneco Denmark

Sjællandsvej 2
5500 Middelfart, Denmark

Tenneco France

ZA des Giraumeries
BP4149 Route d'Ahuillé
53941 Saint-Berthevin cedex

Tenneco Germany

Luitpoldstrasse 83
67480 Edenkoben, Deutschland

Tenneco Iberica

Camino Polio, S/N,
46469 Beniparrell, Spain

Tenneco Italy

Via W. Tobagi, 13
20068 Peschiera Borromeo
(Milano) Italia

Tenneco Middle East, Africa

Avenue du Bourgetlaan 50
1130 Brussels, Belgium

Tenneco Poland & CEE

ul. Przemyslowa 2C
44203 Rybnik, Poland

Tenneco Portugal

Parque Industrial da Autoeuropa
2950-403 Palmela, Portugal

Tenneco South Africa

Block B, 2nd Floor, Pellmeadow Office Park,
60 Civin Drive, Essexwold, Bedfordview
2007 Johannesburg, South Africa

Tenneco Sweden & Baltics

Stationsgatan 2
341 60 Ljungby, Sweden

Tenneco Turkey

Çavuşoğlu Mah. Spor Cad.
No: 86 34873 Kartal - İstanbul, Türkiye

Tenneco UK

Wharfedale Road
Birmingham B11 2DF, England
T +44 (0)121 609 3000
F +44 (0)121 609 3037

Tenneco Ukraine (Russia and CIS)

Desnyanska 19, office 4
03035, Kyiv, Ukraine

Tenneco Original Equipment - Clean Air Plants Worldwide

NORTH AMERICA

Aguascalientes, Mexico
Elkhart, Indiana
Ligonier, Indiana
Litchfield, Michigan
Marshall, Michigan
Kansas City, Missouri*
Lincoln, Nebraska
Seward, Nebraska
Smithville, Tennessee
San Antonio, Texas*
Harrisonburg, Virginia
Cambridge, Ontario, Canada
Puebla, Mexico

SOUTH AMERICA

Buenos Aires, Argentina
Mogi Mirim, Brazil

EUROPE

Gent, Belgium*
Hodkovice, Czech Republic
Etain, France
Iwuy, France*
Rennes, France*
St. Berthevin, France
Edenkoben, Germany
Ingolstadt, Germany*
Saarlouis, Germany*

Zwickau, Germany
Poznan, Poland*
Rybnik, Poland
Palmela, Portugal*
St. Petersburg, Russia
Togliatti, Russia
Valencia, Spain
Arendal, Sweden*
Tredegar, UK
Port Elizabeth, South Africa

ASIA

Beijing, China*
Changchun, China*
Chongqing, China
Dalian, China (2)
Kunshan, China
Liuzhou, China*
Nanchang, China*
Shanghai, China
Shenyang, China*
Wuhu, China*
Chennai, India
Halol, India*
Pune, India

Osaka, Japan
Siheung, Korea
Bangkok, Thailand

**AUSTRALIA/
NEW ZEALAND**
Adelaide, Australia
Elizabeth, Australia*

★ Just in Time Plant



www.walkercatalogue.eu



TENNECO
www.walker-eu.com